

**Ball valve with threaded ends  
acc. to DIN 2999/DIN ISO 228/1  
reduced bore  
design acc. to KLINGER  
material code Xc  
face to face acc. to DIN 3202-M3**

### **Specification:**

One-piece ball valve, threaded ends acc. to DIN 2999/DIN ISO 228/1, reduced bore, face to face acc. to DIN 3202-M3, blow-out-proof stem, body material stainless steel (ASTM A351-CF8M/ DIN 1.4408), PN 63 at 120°C, seat KFG, stem packing PTFE, free of non-ferrous metals, approved by PED, inscrewed part marked with A4, nut marked with A4, high of the handle acc. to "UVV-Großchemie".

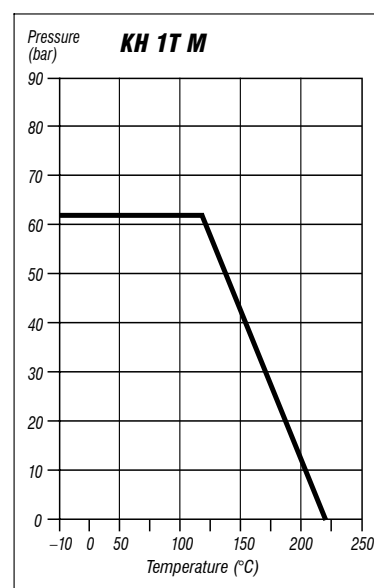
Marking: RK-Proball

Type: KH 1T M-Xc, DIN 3202-M3

No.	Part	Material code
1	body	1.4408
2	seat	KFG
3	ball	1.4408
4	inscrewed part	1.4401
5	thrust washer	PTFE
6	nut	1.4401
7	stem	1.4401
8	packing ring	1.4301
9	stem packing	PTFE
10	handle	1.4301
11	insulation cover	Vinyl

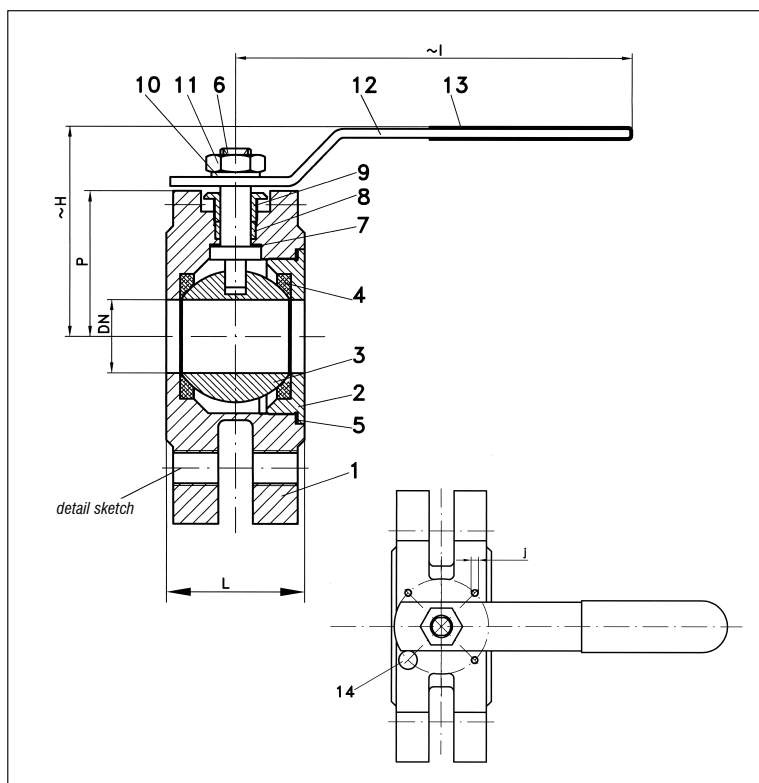
### **Dimensions**

DN	DN	reduced bore	dimensions (mm)			Kv-value	torque	weight
mm	inch	D	H	I	L	m <sup>3</sup> /h	Nm	kg
8	1/4	5,0	47	67	50	3,5	1,5	0,1
10	3/8	7,0	49	67	60	3,5	1,5	0,1
15	1/2	9,0	57	90	75	3,9	1,5	0,2
20	3/4	12,5	60	90	80	7,8	2,0	0,3
25	1	16,0	68	112	90	14,0	4,0	0,4
32	1 1/4	20,0	70	112	110	21,0	6,0	0,7
40	1 1/2	24,5	75	132	120	30,0	8,0	0,8
50	2	32,0	80	132	140	59,0	10,0	1,3



### **ordering example:**

***KH 1T M-Xc, 2", PN 63,  
DIN 3202-M3***



**Wafer type ball valve  
full bore  
design acc. to KLINGER  
material code Xc  
face to face acc. to  
producers standard  
flanges acc. to EN 1092 (DIN 2501)**

### **Specification:**

One-piece ball valve, flanges acc. to EN 1092 (DIN 2501), full bore, blow-out-proof stem, body material lost wax cast stainless steel (ASTM A351-CF8M/DIN 1.4408), seat KFG/KFM, stem packing KF, free of non-ferrous metals, design acc. to EN 19, design of the actuator connection refers to DIN ISO 5211, approved by PED.

Marking: RK-Probball

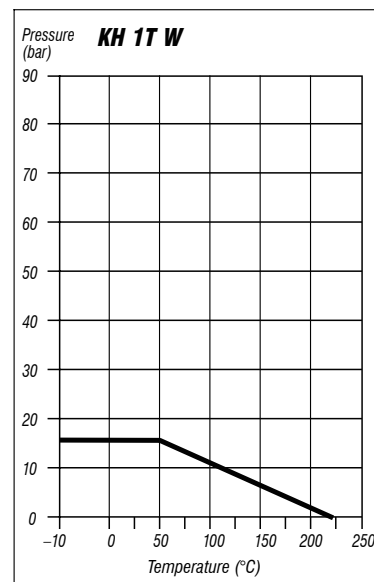
Type: KH 1T W-Xc

Probball KH 1T W ball valves of all sizes are also available with pneumatical, electrical or hydraulic actuators.

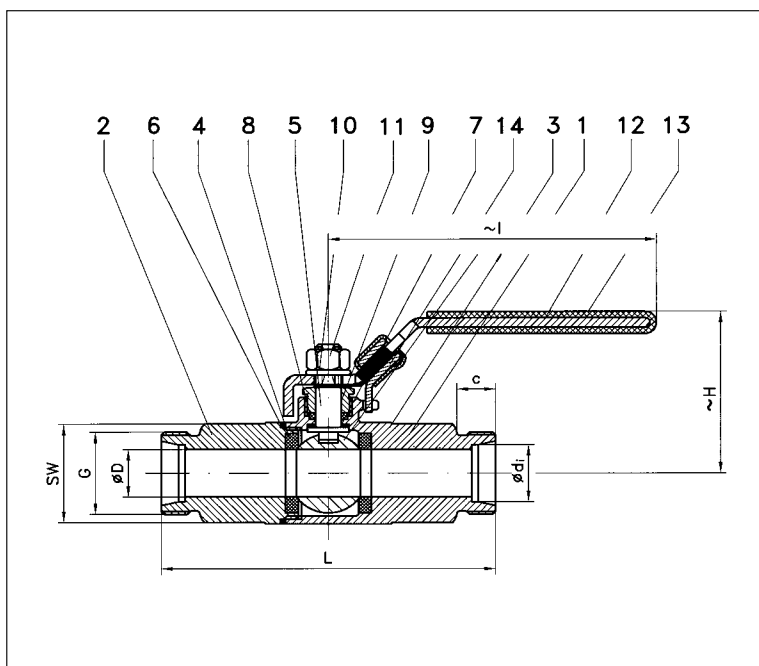
No.	Part	Material code
1	body	1.4408
2	body screw	1.4408
3	ball	1.4408
4	seat	KFG/KFM
5	seal	PTFE
6	stem	1.4401
7	seal	PTFE
8	stem packing	KF
9	gland nut	1.4301
10	thrust washer	1.4301
11	nut	1.4301
12	handle	1.4301
13	insulation cover	Vinyl
14	stop	1.4301

### **Dimensions**

DN mm	DN inch	dimensions (mm)					top flange ISO	torque Nm	weight kg
		H	I	j	L	P			
15	1/2	70	145	M5	34,5	34,0	F3	10	1,25
20	3/4	80	140	M5	38,5	37,8	F3	15	1,75
25	1	82	155	M5	44,5	45,5	F4	20	2,20
32	1 1/4	91	173	M6	54,0	51,5	F5	30	3,40
40	1 1/2	110	187	M6	62,0	57,1	F5	35	4,10
50	2	118	187	M8	72,0	65,0	F7	45	5,30
65	2 1/2	133	250	M8	104,0	84,5	F7	75	6,80
80	3	155	250	M8	118,0	90,6	F7	90	9,20
100	4	185	250	M8	150,0	108,0	F7	140	14,60



**ordering example:**  
**KH 1T W-Xc, 2", PN 16**



**Ball valve with pipe screwing  
light series acc. to DIN 3861  
full bore  
design acc. to KLINGER  
material code Xc  
face to face acc. to DIN 3202 V1**

### Specification:

Two-piece ball valve with pipe screwing light series acc. to DIN 3861, full bore, blow-out-proof stem, body material lost wax cast stainless steel (ASTM A351-CF8M/DIN 1.4408), seat KFG, stem packing KF, free of non-ferrous metals, design acc. to EN 19, safety spring locking device is optional.

Marking: RK-Proball

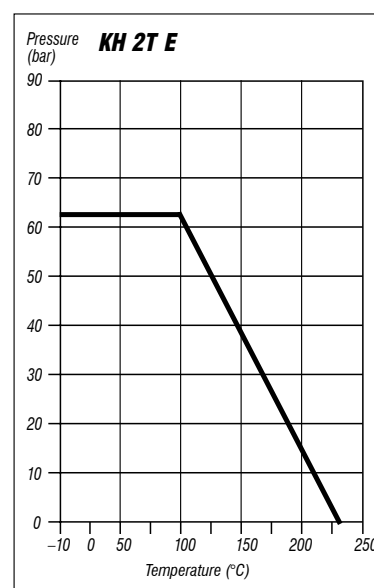
Type: KH 2T E-Xc

No.	Part	Material code
1	body	1.4408
2	cap	1.4408
3	ball	1.4408
4	seat	KFG
5	stem	1.4401
6	seal	KFG
7	thrust washer	PTFE
8	stem packing	KF
9	gland nut	1.4301
10	washer	1.4301
11	nut	1.4301
12	handle	1.4301
13	insulation cover	Vinyl
14	spring locking device*	1.4301

\* special type

### Dimensions

DN	dimensions (mm)							SW (width across in mm)	Kv-value m <sup>3</sup> /h	weight kg
mm	di	D	L	H	I	C	G			
6	8	6,0	76	50	102	10	M 14 x 1,5	22	3	0,2
8	10	8,0	76	50	102	11	M 16 x 1,5	22	5	0,2
10	12	10,0	80	50	102	11	M 18 x 1,5	22	6	0,3
12	15	12,0	96	50	102	12	M 22 x 1,5	24	7	0,3
16	18	15,0	105	52	102	12	M 26 x 1,5	27	9	0,3

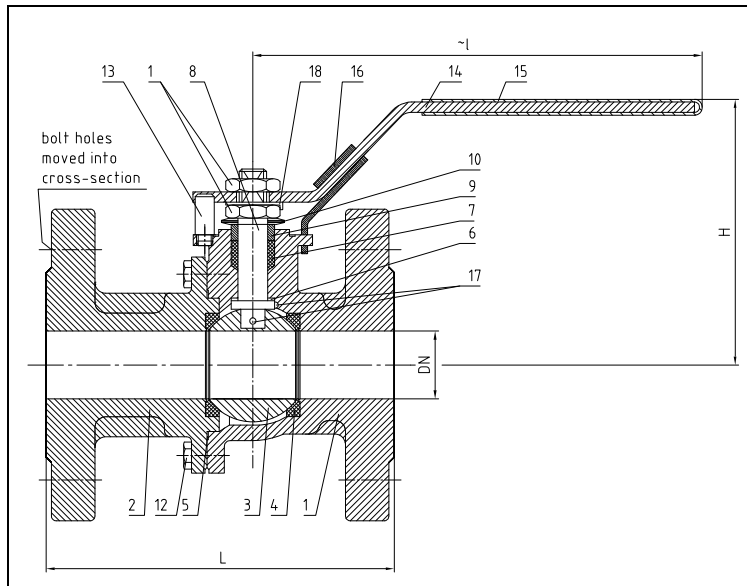


### ordering example:

**KH 2T E-Xc, DN 6, PN 63  
safety spring locking device**

# Ball Valves RK-Probball

## **KH 2T F-FS, DN 15 - DN100, PN 40/16** **with floating ball, soft seated** **Fire-Safe**



Probball KH 2T F ball valves of all sizes are also available with pneumatical, electrical or hydraulic actuators.

**Flanged ball valve**  
**full bore**  
**design acc. to KLINGER**  
**material code VIII and Xc**  
**face to face dimensions acc. to 558, GR.1**  
**face to face dimensions acc. to 558, GR.27**  
**flanges acc. to EN 1092**

### Specification:

Two-piece ball valve, flanges acc. to EN 1092, face to face dimensions acc. to EN 558, GR.1/GR.27, full bore, blow-out-proof stem, body material stainless steel (1.4408) or steel (1.0619), antistatic device, free of non ferrous metals, seat KFM, stem packing graphite, disc spring loaded adjustable, top flange DIN EN ISO 5211, approved by PED, certified acc. to GERMAN clean air act VDI 2440, Fire-Safe acc. to API STD 607 and BS 6755, safety spring locking device.

Marking: RK-Probball  
Types: KH 2T F-FS-VIII  
KH 2T F-FS-Xc

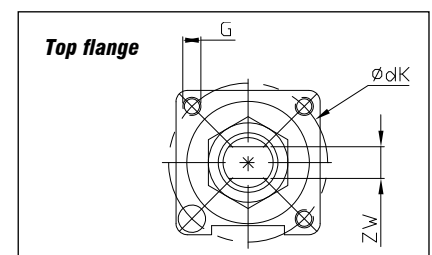
No.	Part	Material code VIII	Material code Xc
1	body	1.0619	1.4408
2	cap	1.0619	1.4408
3	ball	1.4408	1.4408
4	seat	KFM	KFM
5	seal	graphite	graphite
6	thrust washer	KFCM	KFCM
7	stem packing	graphite	graphite
8	stem	1.4401	1.4401
9	ring	1.4401	1.4401
10	belleville washer	1.4310	1.4310
11	nut	1.4301	1.4301
12	screw	A4-70	A4-70
12.1	stud bolt, GR.27	A4-70	A4-70
12.2	nut, GR.27	A4-70	A4-70
13	stop pin	1.4301	1.4301
14	lever	1.4301	1.4301
15	insulation cover	vinyl	vinyl
16	spring locking device	1.4301	1.4301
17	antistatic element	1.4401	1.4401
18	locking washer	1.4301	1.4301

\* special type

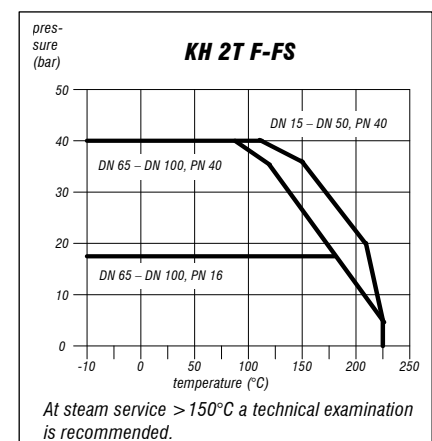
### Dimensions

DN mm	DN Zoll	PN	dimensions (mm)				top flange ISO	torque Nm**	weight kg	
			H	I	L GR.1	L GR.27			kg GR.1	kg GR.27
15	1/2"	40	86	165	130	115	F04	6	2.4	2.3
20	3/4"	40	92	165	150	120	F04	10	3.2	3.1
25	1"	40	106	176	160	125	F05	14	4.6	4.3
32	1 1/4"	40	114	215	180	130	F05	22	6.5	6.0
40	1 1/2"	40	116	215	200	140	F05	30	7.5	7.0
50	2"	40	136	278	230	150	F07	41	12.3	11.4
65	2 1/2"	40	150	278	290	170	F07	65	17.0	15.2
65	2 1/2"	16	150	278	290	170	F07	65	15.7	14.1
80	3"	40	185	375	310	180	F10	94	24.1	22.0
80	3"	16	185	375	310	180	F10	94	22.9	20.5
100	4"	40	200	375	350	190	F10	130	32.9	29.8
100	4"	16	200	375	350	190	F10	130	30.0	26.2

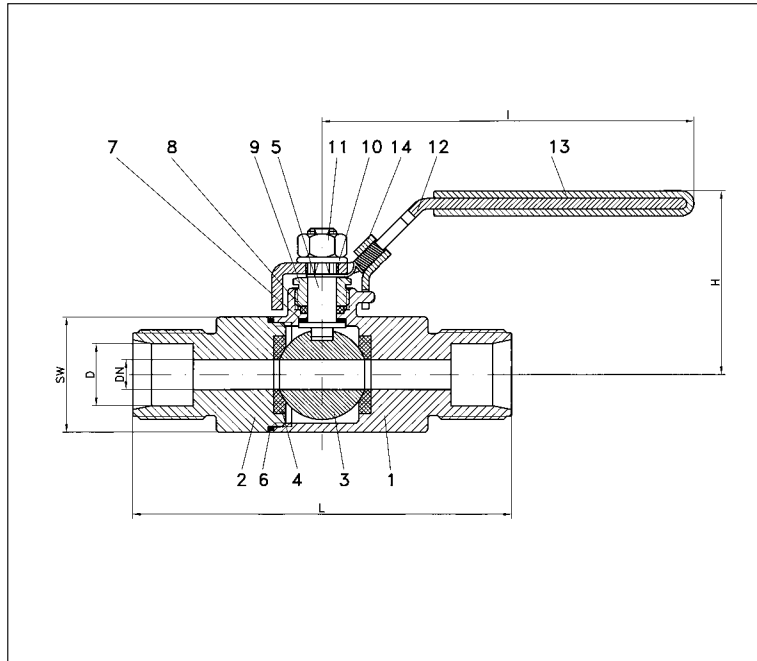
\*\*Necessary torque measured with treated water at Δ P acc. to pressure 16 bar and room temperature



DN (mm)	Ø dk	G	ZW
15	42 x	M 5 x 0.8	8
20	42 x	M 5 x 0.8	8
25	50 x	M 6 x 1.0	10
32	50 x	M 6 x 1.0	10
40	50 x	M 6 x 1.0	10
50	70 x	M 8 x 1.25	14
65	70 x	M 8 x 1.25	14
80	102 x	M 10 x 1.5	19
100	102 x	M 10 x 1.5	19



**Ordering example:**  
**KH 2T F-FS-Xc, DN 65, PN 16, GR.1**



**Ball valve with clamping  
ring connection**

**full bore**

**design acc. to KLINGER**

**material code Xc**

**face to face acc. to DIN 3202 V1**

### **Specification:**

Two-piece ball valve with clamping ring connection, full bore, blow-out-proof stem, body material lost wax cast stainless steel (ASTM A351-CF8M/ DIN 1.4408), seat KFG, stem packing KF, free of non-ferrous metals, design acc. to EN 19, safety spring locking device is optional.

Marking: RK-Probball

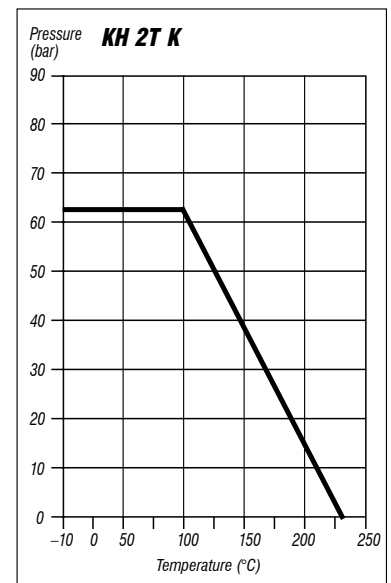
Type: KH 2T K-Xc

No.	Part	Material code
1	body	1.4408
2	cap	1.4408
3	ball	1.4408
4	seat	KFG
5	stem	1.4401
6	seal	KFG
7	thrust washer	PTFE
8	stem packing	KF
9	gland nut	1.4301
10	washer	1.4301
11	nut	1.4301
12	handle	1.4301
13	insulation cover	Vinyl
14	spring locking device *	1.4301

\*Special type

### **Dimensions**

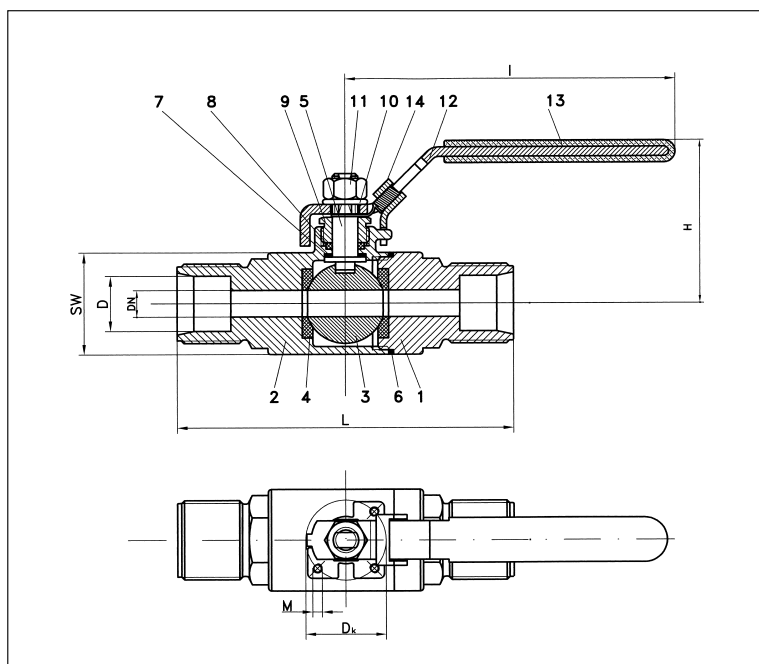
DN mm	PN	dimensions (mm)				SW (width across in mm)	Kv-value m <sup>3</sup> /h	weight kg
		D	L	H	I			
4	63	6	76	50	102	22	2	0,2
6	63	8	76	50	102	22	3	0,2
8	63	10	76	50	102	22	5	0,2
10	63	12	80	50	102	22	6	0,3
12	63	15	96	50	102	24	7	0,3
16	63	18	105	52	102	34	9	0,6



**ordering example:**

**KH 2T K-Xc, DN 6, PN 63**

**safety spring locking device**



**High pressure ball valve  
with clamping ring connection  
full bore  
design acc. to KLINGER  
material code Xc  
face to face DIN 3202 V1**

### Specification:

Two-piece ball valve with clamping ring connection, high pressure PN 160, full bore, blow-out-proof stem, body material lost wax cast stainless steel (ASTM A351-CF8M/DIN 1.4408), seat KFG/KFM, stem packing KF, free of non-ferrous metals, top flange DIN EN ISO 5211, design acc. to EN 19, safety spring locking device is optional.

Marking: RK-Probball

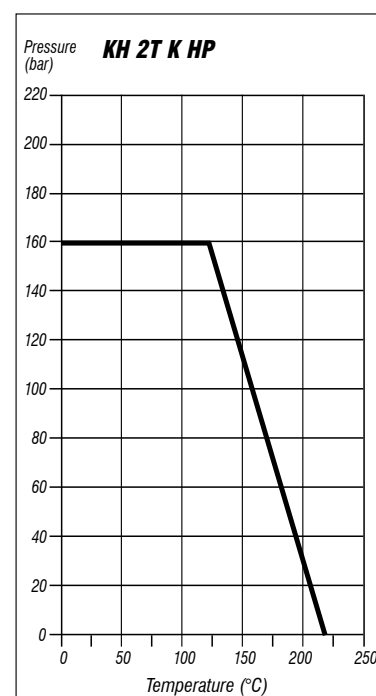
Type: KH 2T K HP-Xc, PN 160

No.	Part	Material code
1	body	1.4408
2	cap	1.4408
3	ball	1.4408
4	seat	KFG/KFM
5	stem	1.4401
6	seal	KFG
7	thrust washer	PTFE
8	stem packing	KF
9	gland nut	1.4301
10	washer	1.4301
11	nut	1.4301
12	handle	1.4301
13	insulation cover	Vinyl
14	spring locking device*	1.4301

\*Special type

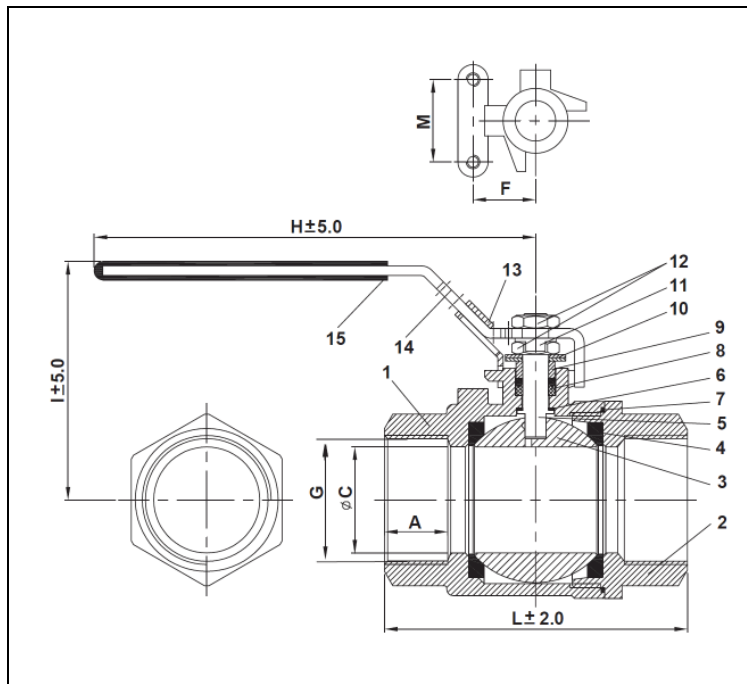
### Dimensions

DN mm	PN	dimensions (mm)				SW (width across in mm)	top flange DIN ISO 5211	D <sub>k</sub>	M	Kv-value m <sup>3</sup> /h	weight kg
		D	L	H	I						
4	160	6	76	50	102	22	F 04	42	M 5	2	0,25
6	160	8	76	50	102	22	F 04	42	M 5	3	0,25
8	160	10	76	50	102	22	F 04	42	M 5	5	0,25
10	160	12	80	50	102	22	F 04	42	M 5	6	0,35
12	160	15	96	50	102	24	F 04	42	M 5	7	0,35
16	160	18	105	52	102	34	F 04	42	M 5	9	0,65



**ordering example:**  
**KH 2T K HP-Xc, DN 6, PN 160**





**Ball valves with threaded ends  
acc. to EN 10226-1 / EN ISO 228-1  
full bore  
design acc. to KLINGER  
material code Xc  
face to face dimensions acc. to  
DIN 3202-M3**

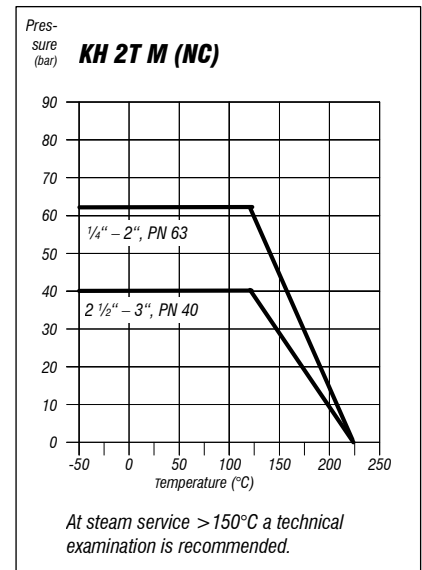
### Specification:

Two-piece ball valve, threaded ends acc. to EN 10226-1 / EN ISO 228-1, face to face dimensions acc. to DIN 3202-M3, full bore, blow-out-proof stem, body material stainless steel (1.4408), free of non ferrous metals, seat KFG, stem packing KF, disc spring loaded adjustable, approved by PED, certified acc. to GERMAN clean air act VDI 2440, safety spring locking device is optional.

Marking: RK-Probball  
Type: KH 2T M (NC)-Xc

No.	Part	Material code Xc
1	body	1.4408
2	cap	1.4408
3	ball	1.4408
4	seat	KFG
5	stem	1.4401
6	thrust washer	KF
7	body seal	KF
8	stem packing	KF
9	gland ring	1.4301
10	disc spring	1.4310
11	nut stopper	1.4301
12	stem nuts	1.4301
13	locking device*	1.4301
14	lever	1.4301
15	insulation cover	PVC

\* special type



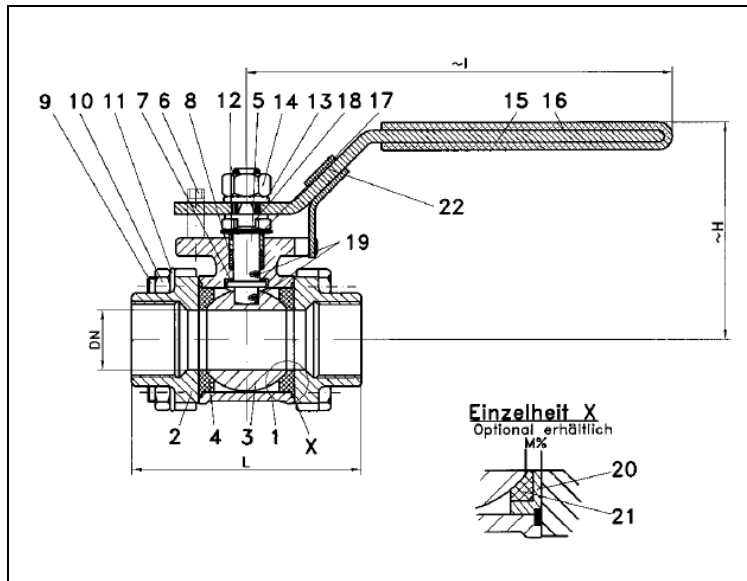
### Dimensions

DN mm	connection G in inch	PN	dimensions (mm)							torque Nm	weight kg
			A	C	F	M	H	I	L		
8	G 1/4"	63	12.5	11.5	12.7	28.5	115	66	50	4	0.3
10	G 3/8"	63	14	12.5	12.7	28.5	115	66	60	4	0.3
15	G 1/2"	63	17.8	15	12.7	28.5	115	68	75	6	0.4
20	G 3/4"	63	19.1	20	22.1	35	132	77	80	8	0.6
25	G 1"	63	22.6	25	22.1	35	162	82	90	11	1.0
32	G 1 1/4"	63	24.9	32	23.6	38	162	87	110	15	1.4
40	G 1 1/2"	63	24.9	38	23.6	38	205	103	120	25	2.3
50	G 2"	63	29.2	49	28.9	38.5	205	111	140	42	3.3
65	G 2 1/2"	40	33.7	65	35	55	260	152	185	60	7.4
80	G 3"	40	36.8	80	37.5	72	260	161	205	70	11.4

**Ordering example:  
KH 2T M (NC), 2", PN 63,  
safety spring locking device**

# Ball Valves RK-Proball

## KH 3T M (NC), 1/4" - 4", PN 100/PN63



Ball valves RK-Proball 3T all sizes are also available with pneumatical, electrical or hydraulic actuators.

**Ball valve with threaded ends**  
acc. to EN 10226-1 / EN ISO 228-1  
**full bore**  
**design acc. to KLINGER**  
**material code VIII and Xc**  
**face to face dimensions acc. to**  
**DIN 3202-M3**

### Specification:

Three-piece ball valve with threaded ends acc. to EN 10226-1 / EN ISO 228-1, face to face dimensions acc. to DIN 3202-M3, full bore, blow-out-proof stem, body material stainless steel (1.4408) or steel (1.0619), antistatic device, free of non ferrous metals, seat KFG, optional in metal chamber plate, stem packing KF, disc spring loaded adjustable, top flange DIN EN ISO 5211, approved by PED, stuffing box acc. to GERMAN clean air act VDI 2440, safety spring locking device is optional.

Marking: RK-Proball

Types: KH 3T M (NC)-VIII

KH 3T M (NC)-Xc

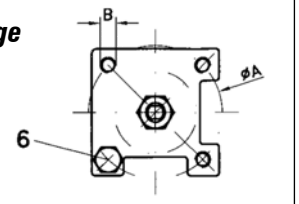
No.	Part	Material code VIII	Material code Xc
1	body	1.0619	1.4408
2	cap	1.0619	1.4408
3	ball	1.4408	1.4408
4	seat	KFG	KFG
5	stem	1.4401	1.4401
6	stopper	1.4301	1.4301
7	thrust washer	KFG	KFG
8	stem packing	KF	KF
9	hex. screw	1.4301	1.4301
10	hex. nut	1.4301	1.4301
11	washer	1.4301	1.4301
12	ring	1.4301	1.4301
13	washer	1.4301	1.4301
14	hex. nut	1.4301	1.4301
15	lever	1.4301	1.4301
16	insulation cover	Vinyl	Vinyl
17	plate spring	1.4310	1.4310
18	tab washer	1.4301	1.4301
19	antistatic element	1.4401	1.4401
20	chamber plate*	1.4301	1.4301
21	seat*	KFG	KFG
22	spring locking device*	1.4301	1.4301

\* special type

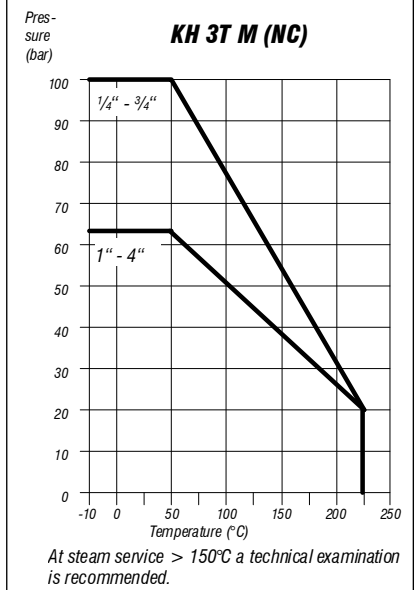
### Dimensions

DN	DN	PN	dimensions (mm)			Kv-value	torque	weight
mm	inch		H	I	L	m³/h	Nm	kg
8	1/4	100	59.7	154	50	6	3	0.4
10	3/8	100	59.7	154	60	7	3	0.4
15	1/2	100	61.7	170	75	10	5	0.7
20	3/4	100	68.4	170	80	25	10	0.8
25	1	63	76.2	223	90	35	11	1.2
32	1 1/4	63	82.4	223	110	46	20	2.0
40	1 1/2	63	98.9	223	120	80	26	2.7
50	2	63	109	304	140	110	30	4.3
65	2 1/2	63	152	304	185	310	70	10.0
80	3	63	159	354	205	360	90	14.3
100	4	63	189	354	240	820	120	25.0

### Top flange



DN	ISO 5211	A	B
8, 10	F03	36	M5
15, 20	F04	42	M5
25, 32, 40	F05	50	M6
50, 65	F07	70	M8
80, 100	F10	102	M10



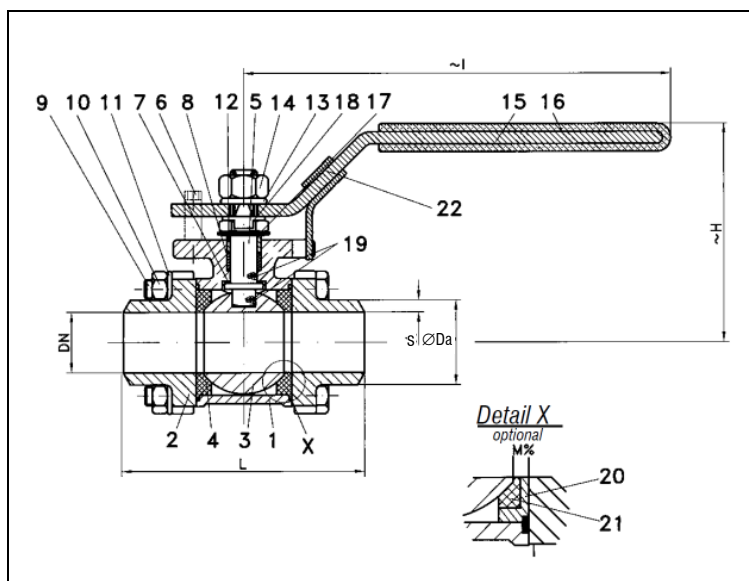
### Ordering example:

**KH 3T M (NC)-Xc, 2", PN 63**



# Ball Valves RK-Proboll

## KH 3T S (NC), 1/4" - 4", PN 100/PN63



Ball valves RK-Proboll 3T all sizes are also available with pneumatical, electrical or hydraulic actuators.

**Ball valve with butt weld ends  
full bore  
design acc. to KLINGER  
material code VIII and Xc  
face to face dimensions acc. to  
DIN 3202-S13  
butt weld ends acc. to EN 12627**

### Specification:

Three-piece ball valve with butt weld ends acc. to EN 12627, face to face dimensions acc. to DIN 3202-S13, full bore, blow-out-proof stem, body material stainless steel (1.4408) or steel (1.0619), antistatic device, free of non ferrous metals, seat KFG, optional in metal chamber plate, stem packing KF, disc spring loaded adjustable, top flange DIN EN ISO 5211, approved by PED, stuffing box acc. to GERMAN clean air act VDI 2440, safety spring locking device is optional.

Marking: RK-Proboll

Types: KH 3T S (NC)-VIII

KH 3T S (NC)-Xc

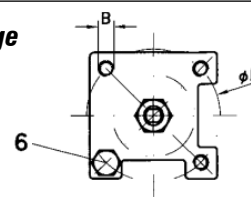
No.	Part	Material code VIII	Material code Xc
1	body	1.0619	1.4408
2	cap	1.0619	1.4408
3	ball	1.4408	1.4408
4	seat	KFG	KFG
5	stem	1.4401	1.4401
6	stopper	1.4301	1.4301
7	thrust washer	KFG	KFG
8	stem packing	KF	KF
9	hex. screw	1.4301	1.4301
10	hex. nut	1.4301	1.4301
11	washer	1.4301	1.4301
12	ring	1.4301	1.4301
13	washer	1.4301	1.4301
14	hex.nut	1.4301	1.4301
15	lever	1.4301	1.4301
16	insulation cover	Vinyl	Vinyl
17	plate spring	1.4310	1.4310
18	tab washer	1.4301	1.4301
19	antistatic element	1.4401	1.4401
20	chamber plate*	1.4301	1.4301
21	seat*	KFG	KFG
22	spring locking device*	1.4301	1.4301

\* special type

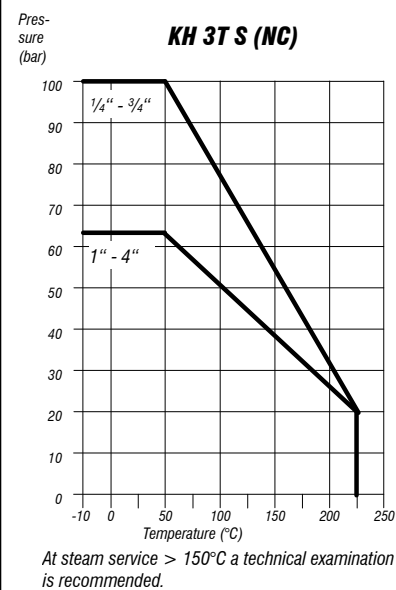
### Dimensions

DN	DN	PN	dimensions (mm)				Kv-value	torque	weight
mm	inch		Ø Da	s	H	I	m³/h	Nm	kg
8	1/4	100	13.5	2.75	59.7	154	6	3	0.4
10	3/8	100	17.2	3.6	59.7	154	7	3	0.4
15	1/2	100	21.3	3.15	61.7	170	10	5	0.6
20	3/4	100	26.9	3.45	68.4	170	25	10	0.8
25	1	63	33.7	4.35	76.2	223	35	11	1.2
32	1 1/4	63	42.4	5.2	82.4	223	46	20	1.9
40	1 1/2	63	48.3	4.15	98.9	223	80	26	2.6
50	2	63	60.3	5.15	109	304	110	30	4.2
65	2 1/2	63	76.1	5.55	152	304	310	70	9.8
80	3	63	88.9	4.45	159	354	220	90	14.3
100	4	63	114	7	189	354	820	120	25.0

### Top flange



DN	ISO 5211	A	B
8, 10	F03	36	M5
15, 20	F04	42	M5
25, 32, 40	F05	50	M6
50, 65	F07	70	M8
80, 100	F10	102	M10

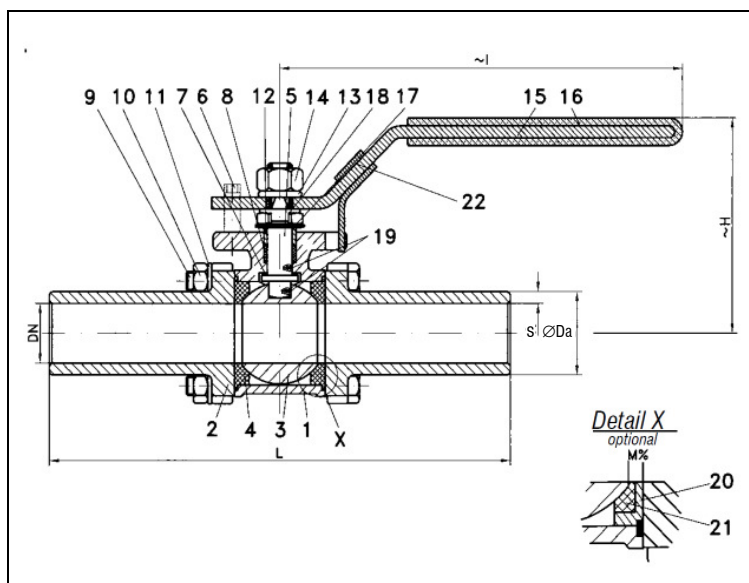


### Ordering example:

**KH 3T S (NC)-Xc, 2", PN 63**

# Ball Valves RK-Proball

## KH 3T SV (NC), 1/2" - 4", PN 100/PN63



Ball valves RK-Proball KH 3T of all sizes are also available with pneumatical, electrical or hydraulic actuators.

**Ball valve with extended butt weld ends full bore design acc. to KLINGER material code VIII and Xc face to face dimensions acc. to producers standard butt weld ends acc. to EN 12627**

### Specification:

Three-piece ball valve with extended butt weld ends acc. to EN 12627, face to face dimensions acc. to producers standard, full bore, blow-out-proof stem, body material stainless steel (1.4408) or steel (1.0619), antistatic device, free of non ferrous metals, seat KFG, optional in metal chamber plate, stem packing KF, disc spring loaded adjustable, top flange DIN EN ISO 5211, approved by PED, stuffing box acc. to GERMAN clean air act VDI 2440, safety spring locking device is optional.

Marking: RK-Proball

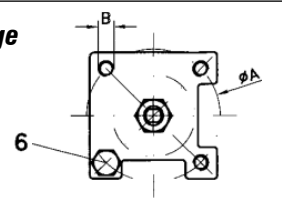
Types: KH 3T SV (NC)-VIII

KH 3T SV (NC)-Xc

No.	Part	Material code VIII	Material code Xc
1	body	1.0619	1.4408
2	cap	1.0619	1.4408
3	ball	1.4408	1.4408
4	seat	KFG	KFG
5	stem	1.4401	1.4401
6	stopper	1.4301	1.4301
7	thrust washer	KFG	KFG
8	stem packing	KF	KF
9	hex. screw	1.4301	1.4301
10	hex. nut	1.4301	1.4301
11	washer	1.4301	1.4301
12	ring	1.4301	1.4301
13	washer	1.4301	1.4301
14	hex. nut	1.4301	1.4301
15	lever	1.4301	1.4301
16	insulation cover	Vinyl	Vinyl
17	plate spring	1.4310	1.4310
18	tab washer	1.4301	1.4301
19	antistatic element	1.4401	1.4401
20	chamber plate*	1.4301	1.4301
21	seat*	KFG	KFG
22	spring locking device*	1.4301	1.4301

\* special type

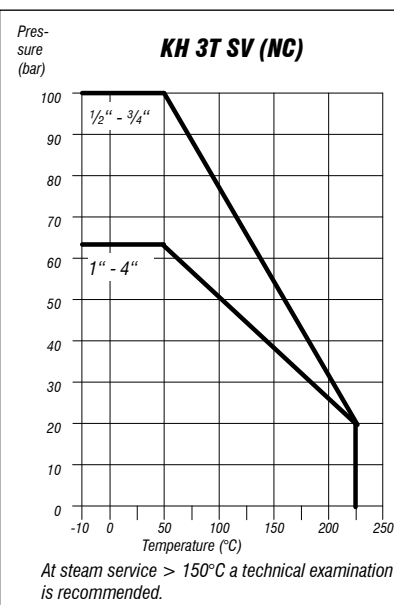
### Top flange



DN	ISO 5211	A	B
15, 20	F04	42	M5
25, 32, 40	F05	50	M6
50, 65	F07	70	M8
80, 100	F10	102	M10

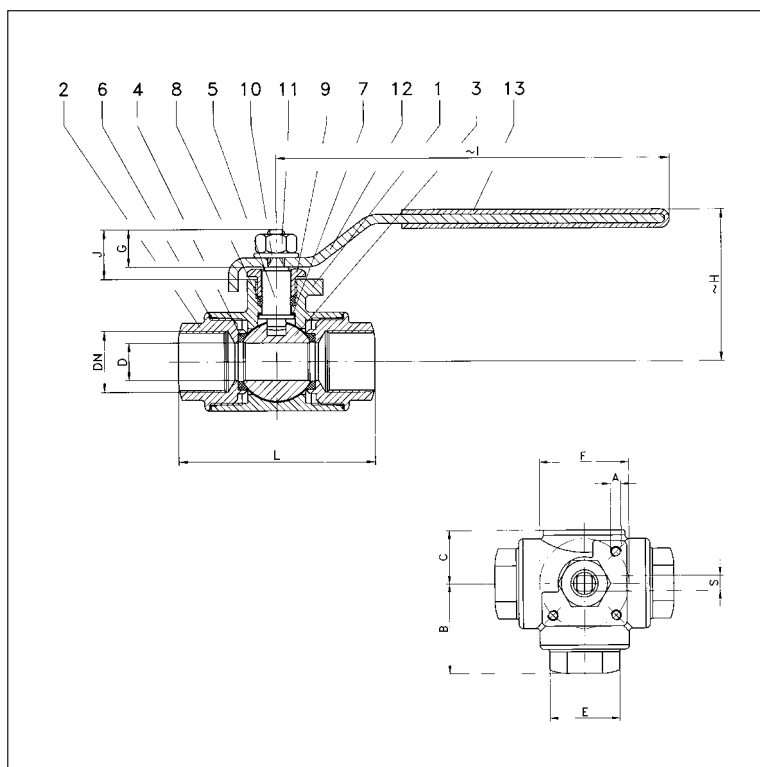
### Dimensions

DN mm	DN inch	PN	dimensions (mm)				Kv-value m³/h	torque Nm	weight kg
			Ø Da	s	H	I	L		
15	1/2	100	23.5	4.25	61.7	170	180	10	5
20	3/4	100	29	4.5	68.4	170	180	25	10
25	1	63	35.7	5.35	76.2	223	180	35	11
32	1 1/4	63	45	6.5	82.4	223	200	46	20
40	1 1/2	63	51	5.5	98.9	223	200	80	26
50	2	63	63	6.5	109	304	210	110	30
65	2 1/2	63	79	7	152	304	240	310	70
80	3	63	92	6	159	354	280	360	90
100	4	63	117	8.5	189	354	280	820	120



### Ordering example:

**KH 3T SV (NC)-Xc, 2", PN 63**




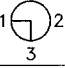
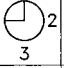
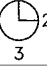
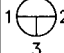
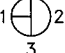
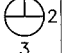
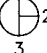
**Ball valve with threaded ends**  
**acc. to DIN 2999/DIN ISO 228/1**  
**reduced bore**  
**design acc. to KLINGER**  
**material code Xc**  
**face to face acc. to producers standard**

### Specification:

Three-way ball valve, threaded ends acc. to DIN 2999/DIN ISO 228/1, reduced bore, blow-out-proof stem, body material lost wax cast stainless steel (ASTM A351-CF8M/DIN 1.4408), seat KFG, stem packing KF, free of non-ferrous metals, DIN ISO top flange design, design acc. to EN 19.

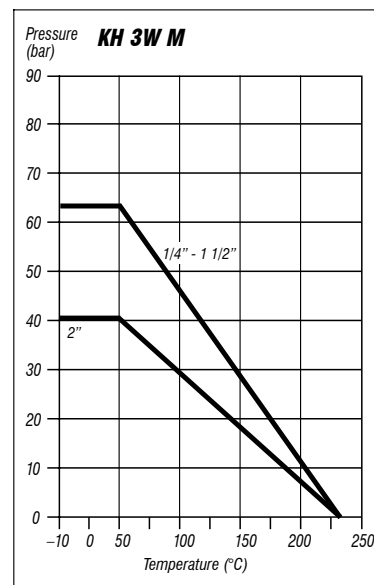
Marking: RK-Probball

Type: KH 3W M-Xc

Port Type	1	2	3	4
L				
T				

Probball KH 3W ball valves of all sizes are also available with pneumatical, electrical or hydraulic actuators.

No.	Part	Material code
1	body	1.4408
2	cap	1.4408
3	ball	1.4408
4	seat	KFG
5	stem	1.4408
6	seal	KFG
7	thrust washer	PTFE
8	stem packing	KF
9	gland nut	1.4301
10	washer	1.4301
11	nut	1.4301
12	handle	1.4301
13	insulation cover	Vinyl



### Dimensions

DN	PN	dimensions (mm)												torque	weight
inch		D	L	B	C	H	I	E	F	A	S	G	J	Nm	kg
1/4	63	9,5	78	39,5	22	54	157	29	42	M5 x 0,8	9	5,2	10	5	0,8
3/8	63	9,5	78	39,5	22	54	157	29	42	M5 x 0,8	9	5,2	10	5	0,8
1/2	63	12,0	78	39,5	22	54	157	29	42	M5 x 0,8	9	5,2	10	5	0,8
3/4	63	15,0	87	44,0	28	63	180	35	50	M6 x 1,0	9	7,1	13	8	1,2
1	63	20,0	107	54,0	31	77	210	41	50	M6 x 1,0	9	12,0	22	14	1,7
1 1/4	63	25,0	122	62,0	34	78	234	53	50	M6 x 1,0	11	17,9	27	17	2,8
1 1/2	63	32,0	132	67,5	40	82	234	58	70	M8 x 1,25	11	17,9	27	37	4,0
2	40	40,0	160	82,0	48	88	234	73	70	M8 x 1,25	14	24,0	27	48	6,8

order example:

**KH 3W M-Xc, 2", PN 40**

In the interest of technical progress, designs and dimensions are subject to modification. 12/2006