



Double flanged fitting that allows longitudinal adjustment - DISMANTLING JOINTS



The Viking Johnson Dismantling Joint is a double flanged fitting that allows longitudinal adjustment in flanged pipe systems. It has been developed to provide greater flexibility at the planning and installation stages of flanged pipework systems and also for subsequent maintenance.



Features and Benefits

Longitudinal adjustment

- Accommodates up to 50mm/2" longitudinal adjustment
- Can be locked at required length with tie bars supplied
- Allows for fast and simple maintenance of valves and pumps
- Simplifies future pipework modifications and reduces down time

Ease and speed of installation

- Installed with a spanner and a torque wrench
- Fewer tie bars than flange holes
- Tie bars act as flange jointing bolts, reducing the number of flange bolts required
- Harnessing accommodated within the bolt circle, eliminating other complex anchoring systems and reducing space requirements

Sealing

- Gasket is compressed independently of the tie bars
- Sealing failure cannot occur once the gasket is compressed to the required torque

Range

- Comprehensive range from DN40 (1½") to over DN2000 (80")
- Custom made dismantling joints on request

Product quality

- Designed and manufactured to BS EN ISO 9001
- Tested to the most exacting requirements of WRAS Water Regulatory Advisory Scheme
- Designed to outlast the pipes on which they are fitted

Gaskets

- Fitted with Grade E (EPDM) water quality gaskets as standard, other grades available

Corrosion and protection

- Flange adaptor and flange spigot coated with Rilsan Nylon 11 as standard
- Rilsan Nylon 11 provides excellent protection from transport, storage, site and corrosion damage
- Alternative finishes are also available
- Tie bars are Zn3 zinc plated as standard, other grades/finishes available

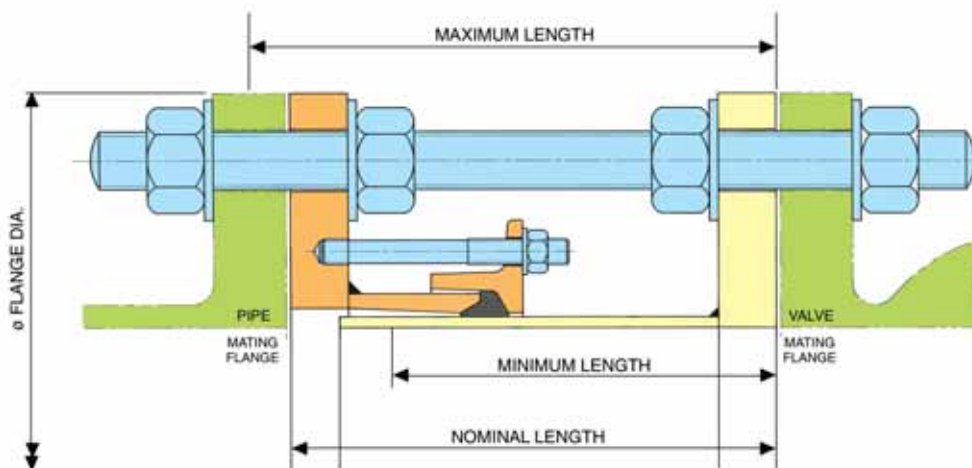
Working pressure

All Viking Johnson Dismantling Joints are fully end load resistant and have a pressure rating equal to that of the flange.

Full face flange

For applications where a full face flange is required i.e. wafer and butterfly valves, the flange of the spigot piece provides a full flange sealing area.





DN100/4" Dismantling Joint in plant room application.

Typical Applications

The Viking Johnson Dismantling Joint is particularly suitable for simplifying the installation and removal of:

- Isolation valves
- Control valves
- Check valves
- Non return valves
- Flow metering equipment
- Pump sets
- Pressure reducing valves
- Flanged pipe and fittings

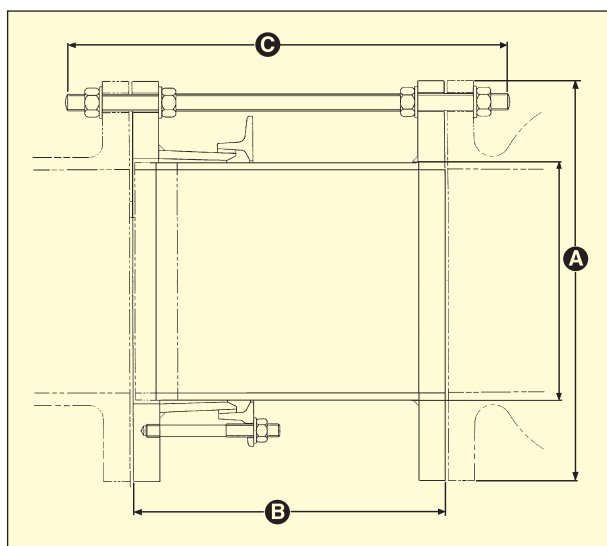
Typical Dismantling Joint applications include: pumping stations, water treatment works, sewage treatment works, plant rooms, meter chambers, power generation equipment and gas distribution stations.



Crown WTP, Cleveland, Ohio, US

Users list

- County of Hawaii - Hilo, Hawaii, US
- East Vista Way Pipeline Vista Irrigation District, Nevada, US
- Raw Water Pump Station - City of Galesburg, Illinois, US
- Crown WTP - Cleveland, Ohio, US
- Water Pumping Station - Crown Point, Indiana, US
- Al Massarat Main Water Supply, Oman
- Great Man Made River, Libya
- Dubai Water Treatment Project, U.A.E.
- SEWA Sharjah, U.A.E.
- Shuweihat Project, U.A.E.
- Client - SWCC, Saudi Arabia
- Sulaibiya STP, Kuwait
- Tai Po Water Treatment Plant, Hong Kong
- Suez Canal North Syphon, Egypt
- Tekapo 'B' Hydro Electric Scheme, New Zealand
- Pathum Thani Water Treatment Plant, Thailand
- Sungai Pia Hydro-Electric Plant, Malaysia
- Chestnut Avenue Waterworks, Singapore
- Manila Water Supply, Philippines
- Aquacapa, Guatemala



BOLT TORQUE TABLE IN DISMANTLING JOINTS

BOLT SIZE	TORQUE	
	lbf.ft	Nm
M12	40 - 50	55 - 65
M16	70 - 80	95 - 110

FULL BOLT TORQUE MUST BE ACHIEVED TO ENSURE THAT COUPLING / FLANGE ADAPTOR etc. FUNCTIONS TO ITS DESIGNED PERFORMANCE STANDARDS.

Pipe Nominal	Spigot O.D.	Flange Nom	Drilling Specification	Flange Adaptor Studs No.- Dia x Length	Gasket	Tie Bolts No.- Diameter	Dimensions			Adjustment			Weight (kg)
							A	B*	C	Min mm	Nom mm	Max mm	
DN40/1.5"	48.3	40	PN10, 16, 25, 40	2 - M12 x 100	589/A1574	4- M16	150	194	300	2	22	42	9.7
DN50/2"	60.3	50	PN10, 16, 25, 40	2 - M12 x 110	1726	4- M16	185	185	300	2	22	42	8.3
DN65/2.5"	76.1	65	PN10, 16	2 - M12 x 110	1727	4- M16	185	185	300	2	22	42	9.3
DN80/3"	88.9	80	PN10, 16, 25, 40	4 - M12 x 110	1699	4- M16	210	185	300	2	22	42	10.8
DN100/4"	114.3	100	PN10, 16	4 - M12 x 110	1700	4- M16	230	185	300	2	22	42	12.1
DN100/4"	114.3	100	PN25, 40	4 - M12 x 100	638/1404	4- M20	235	194	340	2	22	42	19.9
DN125/5"	139.7	125	PN10, 16	4 - M12 x 110	1728	4- M16	285	185	300	2	22	42	14.5
DN125/5"	139.7	125	PN25, 40	4 - M12 x 100	550/A1503	4- M24	270	194	330	2	22	42	25.6
DN150/6"	168.3	150	PN10, 16	4 - M12 x 110	742/A1418	4- M20	285	188	310	2	22	42	21.0
DN150/6"	168.3	150	PN25, 40	4 - M12 x 100	742/A1418	4- M24	300	194	330	2	22	42	29.8
DN175/7"	193.7	175	PN10, 16	4 - M12 x 100	609/1507	4- M20	315	194	340	2	22	42	29.2
DN200/8"	219.1	200	PN10	4 - M12 x 110	743/A1419	4- M20	340	188	310	2	22	42	26.9
DN200/8"	219.1	200	PN16	6 - M12 x 110	743/A1419	4- M20	340	188	310	2	22	42	27.4
DN200/8"	219.1	200	PN25	6 - M12 x 100	743/A1419	4- M24	360	194	355	2	22	42	37.0
DN200/8"	219.1	200	PN40	6 - M12 x 100	743/A1419	4- M27	375	194	350	2	22	42	44.0
DN250/10"	273.0	250	PN10	6 - M12 x 120	527/A1544	4- M20	406	188	310	2	22	42	33.8
DN250/10"	273.0	250	PN16	6 - M12 x 120	527/A1544	4- M24	405	191	330	2	22	42	39.9
DN250/10"	273.0	250	PN25	6 - M12 x 100	527/A1544	4- M27	425	194	350	2	22	42	48.4
DN250/10"	273.0	250	PN40	6 - M12 x 100	527/A1544	4- M30	450	194	385	2	22	42	57.1
DN300/12"	323.9	300	PN10	6 - M12 x 120	528/A1420	4- M20	445	188	310	2	22	42	39.1
DN300/12"	323.9	300	PN16	6 - M12 x 120	528/A1420	4- M24	460	191	330	2	22	42	46.8
DN300/12"	323.9	300	PN25	8 - M12 x 100	528/A1420	4- M27	485	194	350	2	22	42	56.3
DN300/12"	323.9	300	PN40	8 - M12 x 100	528/A1420	4- M30	515	194	385	2	22	42	68.6
DN350/14"	355.6	350	PN10	8 - M12 x 140	J51LS	4- M20	505	302	440	5	30	55	67.7
DN350/14"	355.6	350	PN16	8 - M12 x 140	J51LS	4- M24	520	212	370	5	30	55	63.1
DN350/14"	355.6	350	PN25	8 - M12 x 140	J51LS	4- M30	555	302	500	5	30	55	89.1
DN350/14"	355.6	350	PN40	8 - M16 x 160	J51LS	4- M33	580	307	515	5	35	65	112.0
DN400/16"	406.4	400	PN10	8 - M12 x 140	J53LS	4- M24	565	302	460	5	30	55	80.3
DN400/16"	406.4	400	PN16	8 - M12 x 140	J53LS	4- M27	580	302	490	5	30	55	87.5
DN400/16"	406.4	400	PN25	8 - M12 x 140	J53LS	4- M33	620	302	515	5	30	55	107.0
DN400/16"	406.4	400	PN40	8- M16 x 160	J53LS	4- M36	660	307	545	5	35	65	140.0

Viking Johnson can manufacture Coupling products to virtually any diameter. Those shown are for information. For sizes or diameters not shown, please request further information.

Pipe Nominal	Spigot O.D.	Flange Nom	Drilling Specification	Flange Adaptor Studs No.- Dia x Length	Gasket	Tie Bolts No.- Diameter	Dimensions A B* C			Adjustment Min mm Nom mm Max mm			Weight (kg)
DN450/18"	457	450	PN10	10 - M12 x 140	J55LS	5-M24	615	302	460	5	30	55	89.7
DN450/18"	457	450	PN16	10 - M12 x 140	J55LS	5-M27	640	302	490	5	30	55	102.0
DN450/18"	457	450	PN25	10 - M12 x 140	J55LS	5-M33	670	302	515	5	30	55	118.0
DN450/18"	457	450	PN40	10 - M16 x 160	J55LS	5-M36	685	307	570	5	35	65	150.0
DN500/20"	508	500	PN10	10 - M12 x 140	J57LS	5-M24	670	302	460	5	30	55	100.0
DN500/20"	508	500	PN16	10 - M12 x 140	J57LS	5-M30	715	302	500	5	30	55	123.0
DN500/20"	508	500	PN25	10 - M12 x 140	J57LS	5-M33	730	302	515	5	30	55	133.0
DN500/20"	508	500	PN40	10 - M16 x 160	J57LS	5-M39	755	307	570	5	35	65	176.0
DN550/22"	559	550	PN10	10 - M12 x 140	J59LS	5-M27	730	302	490	5	30	55	114.0
DN550/22"	559	550	PN16	10 - M12 x 140	J59LS	5-M30	775	302	500	5	30	55	125.0
DN550/22"	559	550	PN25	10 - M12 x 140	J59LS	5-M36	785	302	545	5	30	55	139.0
DN600/24"	610	600	PN10	10 - M12 x 140	J60LS	5-M27	780	302	490	5	30	55	124.0
DN600/24"	610	600	PN16	10 - M12 x 140	J60LS	5-M33	840	302	515	5	30	55	159.0
DN600/24"	610	600	PN25	10 - M12 x 140	J60LS	5-M36	845	302	545	5	30	55	167.0
DN600/24"	610	600	PN40	20 - M16 x 160	J111M	5-M45	890	320	630	5	35	65	313.0
DN650/26"	660	650	PN10	12 - M12 x 140	J61LS	6-M27	835	302	490	5	30	55	137.0
DN650/26"	660	650	PN16	12 - M12 x 140	J61LS	6-M33	860	302	515	5	30	55	156.0
DN650/26"	660	650	PN25	12 - M12 x 140	J61LS	6-M36	895	302	545	5	30	55	199.0
DN650/26"	660	650	PN40	12 - M16 x 160	J112M	6-M45	945	320	630	5	35	65	338.0
DN700/28"	711	700	PN10	12 - M12 x 140	J63LS	6-M27	895	302	490	5	30	55	151.0
DN700/28"	711	700	PN16	12 - M12 x 140	J63LS	6-M33	910	302	540	5	30	55	167.0
DN700/28"	711	700	PN25	12 - M12 x 140	J63LS	6-M39	960	302	570	5	30	55	215.0
DN700/28"	711	700	PN40	12 - M16 x 160	J113M	6-M45	995	320	665	5	35	65	430.5
DN800/30"	813	800	PN10	12 - M12 x 140	J65LS	6-M30	1015	302	500	5	30	55	184.0
DN800/30"	813	800	PN16	12 - M12 x 140	J65LS	6-M36	1025	302	545	5	30	55	199.0
DN800/30"	813	800	PN25	12 - M16 x 160	J65LS	6-M45	1085	307	630	5	35	65	285.0
DN800/30"	813	800	PN40	12 - M16 x 160	J123M	6-M52	1140	320	680	5	35	65	492.0
DN900/36"	914	900	PN10	14 - M12 x 140	J67LS	7-M30	1115	302	530	5	30	55	205.0
DN900/36"	914	900	PN16	14 - M12 x 140	J67LS	7-M36	1125	302	570	5	30	55	223.0
DN900/36"	914	900	PN25	14 - M16 x 160	J67LS	7-M45	1185	307	665	5	35	65	346.0
DN900/36"	914	900	PN40	28 - M16 x 160	J117M	7-M52	1250	320	725	5	35	65	554.0
DN1000/40"	1016	1000	PN10	14 - M16 x 160	J71LS	7-M33	1230	307	540	5	35	65	271.0
DN1000/40"	1016	1000	PN16	14 - M16 x 160	J71LS	7-M39	1255	307	600	5	35	65	300.0
DN1000/40"	1016	1000	PN25	14 - M16 x 160	J119M	7-M52	1320	320	725	5	35	65	517.0
DN1000/40"	1016	1000	PN40	28 - M16 x 230	J172H	14-M52	1360	462	900	5	55	105	104.9
DN1100/42"	1118	1100	PN10	16 - M16 x 160	J73LS	8-M33	1340	307	540	5	35	65	301.0
DN1100/42"	1118	1100	PN16	16 - M16 x 160	J73LS	8-M39	1355	307	600	5	35	65	329.0
DN1200/48"	1219	1200	PN10	16 - M16 x 160	J121M	8-M36	1455	320	570	5	35	65	448.0
DN1200/48"	1219	1200	PN16	16 - M16 x 160	J121M	8-M45	1485	320	630	5	35	65	508.0
DN1400/56"	1420	1400	PN10	18 - M16 x 160	J125M	9-M39	1675	320	600	5	35	65	547.0
DN1400/56"	1420	1400	PN16	18 - M16 x 160	J125M	9-M45	1685	320	665	5	35	65	602.0
DN1500/60"	1524	1500	PN10	18 - M16 x 160	J126M	9-M39	1785	320	600	5	35	65	595.0
DN1500/60"	1524	1500	PN16	18 - M16 x 160	J126M	9-M52	1820	320	725	5	35	65	724.0
DN1600/64"	1620	1600	PN10	40 - M16 x 230	J181H	10-M45	1915	462	795	5	55	105	1103.0
DN1600/64"	1620	1600	PN16	40 - M16 x 230	J181H	10-M52	1930	462	870	5	55	105	1188.0
DN1800/72"	1820	1800	PN10	44 - M16 x 230	J183H	11-M45	2115	462	795	5	55	105	1176.0
DN1800/72"	1820	1800	PN16	44 - M16 x 230	J183H	11-M52	2130	462	900	5	55	105	1363.0
DN2000/80"	2032	2000	PN10	48 - M16 x 230	J186H	12-M45	2325	462	820	5	55	105	1351.0
DN2000/80"	2032	2000	PN16	48 - M16 x 230	J186H	12-M56	2345	462	960	5	55	105	1594.0
B* - Dimension B is shown for the "Nominal" position, i.e. when the Dismantling Joint spigot is positioned at the mid-point giving maximum plus and minus adjustment. Above 1000mm Nominal, PN10 and PN16 versions only are shown for clarity. PN25 and PN40 versions are available, as are specialist drillings and/or lengths of Dismantling Joint.													

Viking Johnson can manufacture Coupling products to virtually any diameter. Those shown are for information. For sizes or diameters not shown, please request further information.

Dismantling Joints for ANSI / AWWA Drillings

Pipe Nominal	Spigot O.D.	Flange Nom	Drilling Specification	Flange Adaptor Studs No.- Dia x Length	Gasket	Tie Bolts No.- Diameter	Dimensions A B* C (inches)			Adjustment Min Nom Max (inches)			Weight (lb)
3"	3.5"	3"	ANSI 150	4 - M12 x 110	1699	4 - 0.625"	11.8	7.3	7.5	0.08	0.87	1.65	23.8
4"	4.5"	4"	ANSI 150	4 - M12 x 110	1700	4 - 0.625"	11.8	7.3	9.0	0.08	0.87	1.65	26.6
6"	6.625"	6"	ANSI 150	4 - M12 x 110	742/A1418	4 - 0.75"	13.0	7.6	11.0	0.08	0.87	1.65	65.6
8"	8.625"	8"	ANSI 150	4 - M12 x 95	743/A1419	4 - 0.75"	13.4	7.4	13.5	0.08	0.87	1.65	79.2
10"	10.75"	10"	ANSI 150	6 - M12 x 95	527/A1544	4 - 0.875"	13.8	7.6	16.0	0.08	0.87	1.65	107.0
12"	12.75"	12"	ANSI 150	6 - M12 x 100	528/A1420	4 - 0.875"	13.7	7.9	19.0	0.08	0.87	1.65	136.0
14"	14"	14"	ANSI 150	6 - M12 x 140	J51LS	4 - 1"	18.5	11.7	21.0	0.20	1.18	2.16	163.0
16"	16"	16"	ANSI 150	8 - M12 x 140	J53LS	4 - 1"	18.5	11.8	23.5	0.20	1.18	2.16	213.0
18"	18"	18"	ANSI 150	8 - M12 x 140	J55LS	4 - 1.125"	19.5	11.9	25.0	0.20	1.18	2.16	227.0
20"	20"	20"	ANSI 150	10 - M12 x 140	J57LS	4 - 1.125"	21.3	13.8	27.5	0.20	1.18	2.16	282.0
24"	24"	24"	AWWA C207	10 - M12 x 140	J60LS	4 - 1.25"	20.5	11.9	32.0	0.20	1.18	2.16	273.0
26"	26"	26"	AWWA C207	12 - M12 x 140	J61LS	6 - 1.25"	20.5	11.9	34.25	0.20	1.18	2.16	301.0
28"	28"	28"	AWWA C207	12 - M12 x 140	J63LS	6 - 1.25"	20.5	11.9	36.5	0.20	1.18	2.16	332.0
30"	30"	30"	AWWA C207	14 - M12 x 140	J64LS	7 - 1.25"	19.5	11.9	38.8	0.20	1.18	2.16	379.0
32"	32"	32"	AWWA C207	14 - M12 x 140	J65LS	7 - 1.5"	21.0	11.9	41.75	0.20	1.18	2.16	405.0
36"	36"	36"	AWWA C207	16 - M16 x 150	J67LS	8 - 1.5"	22.0	11.8	46.0	0.20	1.38	2.56	374.0
40"	40"	40"	AWWA C207	18 - M16 x 160	J119M	9 - 1.5"	21.3	12.1	50.75	0.20	1.38	2.56	596.0
42"	42"	42"	AWWA C207	18 - M16 x 150	J119M	9 - 1.5"	23.25	12.1	53.0	0.20	1.38	2.56	660.0
44"	44"	44"	AWWA C207	16 - M16 x 160	J73LS	8 - 1.5"	22.25	12.1	55.25	0.20	1.38	2.56	662.0
48"	48"	48"	AWWA C207	22 - M16 x 160	J121M	11 - 1.5"	23.6	12.6	59.5	0.20	1.38	2.56	1238.0
52"	52"	48"	AWWA C207	22 - M16 x 160	J124M	11 - 1.5"	22.4	12.6	59.5	0.20	1.38	2.56	1120.0
56"	56"	54"	AWWA C207	22 - M16 x 160	J125M	11 - 1.625"	23.0	12.6	66.3	0.20	1.38	2.56	1507.0
60"	60"	60"	AWWA C207	26 - M16 x 160	J126M	13 - 1.75"	25.0	12.6	73	0.20	1.38	2.56	1834.0
64"	64"	66"	AWWA C207	26 - M16 x 160	J127M	13 - 1.625"	31.0	18.2	80	0.20	2.16	4.13	2483.0
72"	72"	72"	AWWA C207	30 - M16 x 230	J183H	20 - 1.75"	31.0	18.2	86.5	0.20	2.16	4.13	3762.0
80"	80"	84"	AWWA C207	64 - M16 x 230	J186H	16 - 1.875"	32.0	18.2	100	0.20	2.16	4.13	5579.0
84"	84"	84"	AWWA C207	64 - M16 x 230	J187H	16 - 2"	31.0	18.2	99.8	0.20	2.16	4.13	4512.0
96"	96"	96"	AWWA C207	68 - M16 x 230	J333X	17 - 2.25"	30.0	18.2	113.25	0.20	2.16	4.13	5165.0
<p>Note: All AWWA C207 flanges have a ANSI 150lb pattern. B* - Dimension B is shown for the "Nominal" position, i.e. when the Dismantling Joint spigot is positioned at the mid-point giving maximum plus and minus adjustment.</p>													

Viking Johnson can manufacture Coupling products to virtually any diameter. Those shown are for information. For sizes or diameters not shown, please request further information.



ISO 9001



ISO 14001

CRANE

A Crane Co. Company

Tel: +44 (0)1462 443322
Fax: +44 (0)1462 443311
email: info@vikingjohnson.com
www.vikingjohnson.com

46-48 Wilbury Way
Hitchin Hertfordshire
SG4 0UD
United Kingdom



VIKING JOHNSON

World leaders in pipe joints and repair products

For further information on all Viking Johnson products and services contact our Marketing Department.