



VIKING JOHNSON

EASIRANGE

Repair and Tapping Solutions



EasiRange – Repair and Tapping Solutions

The Viking Johnson EasiRange has been developed to provide a comprehensive range of pipe repair and tapping products to serve the needs of today's Water Industry. The EasiRange of products includes EasiClamp, EasiTap, EasiTee and EasiCollar.



A



C



D



E



B



F

- A - DN300/12" x DN300/12" Universal EasiTee
- B - DN100/4" x DN100/4" Universal EasiTee
- C - DN175/7" EasiTap with 2" outlet
- D - DN100/4" EasiClamp
- E - DN150/6" EasiTap with 1" drilled and tapped outlet
- F - RingSeal EasiTee

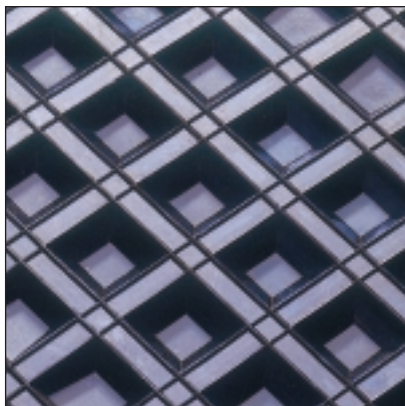
Features and Benefits

Permanent Seal

EasiRange products guarantee a reliable, permanent seal even on badly corroded pipes (see Figure 1). Incorporated within every EasiRange product, except the RingSeal EasiTee, is Viking Johnsons' unique 100% circumferential 'Waffle' gasket which performs a leaktight seal and also caters for circumferential or longitudinal cracks. The RingSeal EasiTee uses a twin seal gasket to provide a permanent seal at the point of tapping.

Minimise Stockholding

EasiRange products offer the customer the ability to reduce stocks due to their wide pipe outside diameter tolerance range. This allows one fitting to suit most popular materials of the same nominal bore. The tolerance range will vary according to the product type and size (see product tables).



Waffle Gasket

High Strength

EasiRange products are constructed of ductile and/or malleable iron or steel half housings, giving them the benefit of high strength. The products will support and seal around the pipe for the full length of the body, ensuring that sealing effectiveness is maintained in all circumstances. The inherent strength of the EasiRange products will cater for circumferential pipe shear and also realign pipes.

Ease of Installation

EasiRange products allow rapid and easy installation even under adverse site conditions. All the products, except MattSeal and RingSeal, feature self retaining bolts. No specialist installation equipment is required, simply a torque wrench to confirm correct bolt torque.

Corrosion Protection

EasiRange products are well equipped to withstand transport, storage, site and corrosion damage, eliminating the need for further protection such as on-site wrapping. For long-term corrosion protection the EasiRange components are coated in Rilsan Nylon 11 as standard. The nuts and bolts are coated in either Rilsan Nylon 11 or Sheraplex (at the discretion of Viking Johnson). Sheraplex meets WIS 4-52-03. Rilsan Nylon 11 has approval to WIS 4-52-01 (Part 1), which demand the highest adhesion, flexibility, penetration and impact resistance characteristics.

Pressure Rating

The complete EasiRange is suitable for a 16bar (230psi) working pressure and a test pressure of 24bar (350psi).

Size Range

EasiClamp and EasiTap - DN50/2" to DN600/24"

Universal EasiTee - DN80/3" to DN300/12"

MattSeal EasiTee - DN350/14" to DN600/24"

RingSeal EasiTee - DN350/14" to DN1200/48"

The Universal, MattSeal and RingSeal EasiTees are available with a full range of flanged outlets, including size for size. NB: Size for size - e.g. DN300/12" flanged outlet off DN300/12" main line.

The EasiRange comprises:

EasiClamp

It is estimated that in many countries upto 30% of all treated water is lost from distribution pipelines through leakage*. EasiClamp is a robust, high strength repair clamp that is designed to help combat this wastage. EasiClamp offers the end user a quick, guaranteed, first time seal on any type of pipe damage.

NB: If the extent of the pipe damage is greater than the length of the clamp, it is recommended that a cut out repair is undertaken.

* UK Water Industry estimate.

EasiTap

EasiTap provides a quick, cost-effective method of installing or replacing service pipe connections whilst under operating pressure. The connections can therefore be carried out without any interruption to the water supply. It has the same design features as the EasiClamp and incorporates either a female threaded outlet or a drilled and tapped boss, to allow simple underpressure connections to be made using standard drilling equipment.

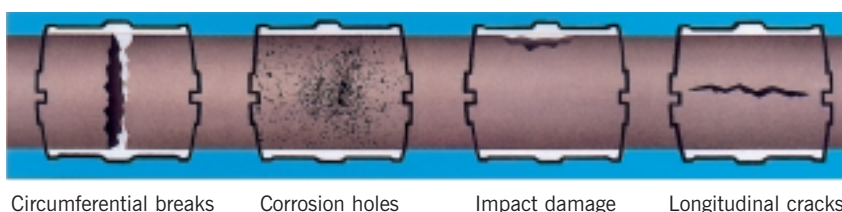
EasiTee

EasiTee allows flanged branch pipe connections to be made to an existing water main, whilst it remains pressurised. It therefore reduces costs as interruption to supply is avoided. EasiTee is available in a comprehensive range of main and outlet sizes.

EasiCollar

EasiCollar is an adaptable repair collar that provides an effective, permanent repair to leaking spigot and socket joints. Due to its ability to be installed whilst the main is under operating pressure, it eliminates costly and time consuming water mains shut downs.

FIG.1 Types of damage that EasiRange products will seal and support



Features and Benefits

Permanent Seal

Unique 'Waffle' gasket, guarantees a first time permanent seal.

Reduces Stock

EasiClamp features a pipe outside diameter tolerance range of up to 26mm, which means one fitting will suit the majority of pipe ODs for the same nominal bore.

High Strength

EasiClamp has ductile and/or malleable iron or steel bodies that reinforce the pipeline and help to form the seal around the full length of the clamp.

Ease of Installation

Quick and easy assembly. Self retaining bolts and no specialist equipment required, except a torque wrench to confirm correct bolt torque.

Corrosion Protection

Sizes DN50/2" to DN600/24": all components are coated with Rilsan Nylon 11 as standard. The nuts and bolts are coated in either Rilsan Nylon 11 or Sheraplex (at the discretion of Viking Johnson).

Pressure Rating

16bar (230psi) working pressure/24bar (350psi) test pressure.

Size Range

DN50/2" to DN600/24".



DN100/4" EasiClamp

Pipe Nom	Pipe Materials	Pipe OD Range Min	Pipe OD Range Max	No. & size of bolts	Weight kg	Length** mm
DN50 2"	Cast Iron	66.0	75.0	4 - M12 x 65	4.1	200
DN65 2.5"	2.5" Steel, 3" Steel (ISO/4200 series 3), Cast Iron, 2.5" PVC	75.0	84.0	4 - M12 x 65	4.4	200
DN80 3"	Ductile Iron, Cast Iron, 3.5" Steel	92.3	103.0	4 - M16 x 95	6.1	200
DN100 4"	Ductile Iron, 125mm Metric PE, Cast Iron, 125 PVC	115.0	125.6	4 - M16 x 95	6.8	200
DN125 5"	Ductile Iron, Cast Iron	141.0	153.9	4 - M16 x 95	7.5	200
DN150 6"	Ductile Iron, 6" Steel, Cast Iron, 180mm Metric PE, 6" PVC, 180 PVC	166.0	181.2	4 - M16 x 95	8.3	200
DN175 7"	Cast Iron, 200 PVC	200.0	210.0	4 - M16 x 95	9.0	200
DN200	8" Steel, Ductile Iron, 8" PVC, 225 PE / PVC	216.5	226.0	4 - M16 x 95	9.5	200
8"	Cast Iron, Imp and Metric AC (200mm Class 15 & 20 only)	230.1	243.6	4 - M16 x 95	10.8	200
DN250 10"	Cast Iron, Ductile Iron, Imp and Metric AC, 10" Steel	269.2	293.5	6 - M20 x 140	50.0	368
DN300 12"	Cast Iron, 12" Steel, Imp AC Ductile Iron, Class 15 & 20 Metric AC	323.1	349.0	6 - M24 x 160	58.8	439
DN350 14"	Cast Iron, Ductile Iron, Steel	MADE TO ORDER. TOLERANCE RANGE ± 12 mm ACCORDING TO YOUR PIPE OD		4 - M30 x 140	71.0	340
DN400 16"	Cast Iron, Ductile Iron, Steel			4 - M30 x 140	75.7	340
DN450 18"	Cast Iron, Ductile Iron, Steel			4 - M30 x 160	98.8	340
DN500 20"	Cast Iron, Ductile Iron, Steel			4 - M30 x 160	135.0	340
DN550 22"	Cast Iron, Ductile Iron, Steel			4 - M33 x 180	183.0	340
DN600 24"	Cast Iron, Ductile Iron, Steel			4 - M33 x 180	183.0	340

For nominal sizes 15mm - 50mm (1/2" - 2"), Viking Johnson offer the HandiBand range of mini stainless steel repair clamps. Further details available on request.

** For sizes DN350/14" and above, alternative clamp lengths are available, details on request. Other sizes available on request.

Features and Benefits

Permanent Seal

Unique 'Waffle' gasket, guarantees a first time permanent seal.

Reduces Stock

EasiTap features a pipe outside diameter tolerance range of up to 26mm, which means one fitting will suit the majority of pipe od's for the same nominal bore.

High Strength

EasiTap has ductile and/or malleable iron or steel bodies that reinforce the pipeline and help to form the seal around the full length of the clamp.

Ease of Installation

Quick and easy assembly. Self retaining bolts and no specialist equipment required, except a torque wrench to confirm correct bolt torque.

Corrosion Protection

Sizes DN50/2" to DN600/24": all components are coated with Rilsan Nylon 11 as standard. The nuts and bolts are coated in either Rilsan Nylon 11 or Sheraplex (at the discretion of Viking Johnson).

Pressure Rating

16bar (230psi) working pressure/ 24bar (350psi) test pressure.

Size Range

Main line DN50/2" to DN600/24". Outlets DN20/3/4" to DN50/2".

EasiTap Underpressure Features and Benefits

No costly mains shutdown - costs are reduced as the EasiTap will allow service pipe branch connections to be made whilst the main line is pressurised.



DN175/7" EasiTap with 2" outlet

This avoids:

- a) Any potential expense of informing customers of a shutdown period.
- b) Any pumping diversion expense.
- c) Any dirty water complaints, common after supplies have been interrupted (due to the hydraulic effects of water scour and pressure surge).

Pipe Nom	Pipe Materials	Pipe OD Range Min	Pipe OD Range Max	No. & size of bolts	Weight kg	Length ** mm	Boss BSP*	Outlet Size BSP
DN50 2"	Cast Iron	66.0	75.0	4 - M12 x 65	4.1	200	3/4"	
DN65 2.5"	2.5" Steel, 3" Steel (ISO/4200 series 3), Cast Iron, 2.5" PVC	75.0	84.0	4 - M12 x 65	4.4	200	3/4"	
DN80 3"	Ductile Iron, Cast Iron, 3.5" Steel	92.3	103.0	4 - M16 x 95	6.1	200	3/4"	1 1/2" or 2"
DN100 4"	Ductile Iron, 125mm Metric PE, Cast Iron, 125 PVC	115.0	125.6	4 - M16 x 95	6.8	200	1"	2"
DN125 5"	Ductile Iron, Cast Iron	141.0	153.9	4 - M16 x 95	7.5	200	1"	2"
DN150 6"	Ductile Iron, 6" Steel, Cast Iron, 180mm Metric PE, 6" PVC, 180 PVC	166.0	181.2	4 - M16 x 95	8.3	200	1"	2"
DN175 7"	Cast Iron 200 PVC	200.0	210.0	4 - M16 x 95	9.0	200	1"	2"
DN200	8" Steel, Ductile Iron, 8" PVC, 225 PE/PVC	216.5	226.0	4 - M16 x 95	9.5	200	1"	2"
8"	Cast Iron, Imp and Metric AC (200mm Class 15 & 20 only)	230.1	243.6	4 - M16 x 95	10.8	200	1"	2"
DN250 10"	Cast Iron, Ductile Iron, Imp and Metric AC, 10" Steel	269.2	293.5	6 - M20 x 140	50.0	368	1"	2"
DN300 12"	Cast Iron, 12" Steel, Imp AC, Ductile Iron, Class 15 & 20 Metric AC	323.1	349.0	6 - M24 x 160	58.8	439	1"	2"
DN350 14"	Cast Iron, Ductile Iron, Steel	MADE TO ORDER. TOLERANCE RANGE \pm 12mm ACCORDING TO YOUR PIPE OD		4 - M30 x 140	71.0	340	1"	2"
DN400 16"	Cast Iron, Ductile Iron, Steel			4 - M30 x 140	75.7	340	1"	2"
DN450 18"	Cast Iron, Ductile Iron, Steel			4 - M30 x 160	98.8	340	1"	2"
DN500 20"	Cast Iron, Ductile Iron, Steel			4 - M30 x 160	135.0	340	1"	2"
DN550 22"	Cast Iron, Ductile Iron, Steel			4 - M33 x 180	183.0	340	1"	2"
DN600 24"	Cast Iron, Ductile Iron, Steel			4 - M33 x 180	183.0	340	1"	2"

* Boss version is available drilled and tapped B.S.P. as EasiTap. ** For sizes DN350/14" and above, alternative clamp lengths are available, details on request. Other sizes available on request.

The EasiTee range comprises three products, Universal, MattSeal and RingSeal, with distinct characteristics and features with each one.

The following section will help you differentiate between these products and make your choice.

Features and Benefits

Permanent Seal

Unique 'Waffle' gasket, guarantees a first time permanent seal for the Universal and MattSeal. The RingSeal uses a twin seal gasket to provide a permanent seal at the point of tapping.

Reduces Stock

Universal EasiTee features a pipe outside diameter tolerance range of up to 26mm, which means that one fitting will suit the majority of pipe ODs for the same nominal bore. MattSeal and RingSeal offer a total tolerance range of 12mm (+/- 6mm on the required pipe OD).

Pipe Materials

Universal is suitable for cast iron, ductile iron, steel and PE (providing it falls within the OD range of the fitting). MattSeal and RingSeal are made to measure to suit cast iron (AB and CD), ductile iron and steel.

High Strength

EasiTee has ductile and/or malleable iron or steel bodies that reinforce the pipeline and help to form the seal around the full length of the tee (on the Universal and MattSeal).

Ease of Installation

The Universal EasiTee allows a rapid assembly due to the swing over bolt action and unique hinged bridging plates, that deflect during bolt up. Universal EasiTee also forms an effective seal with just 4 or 6 bolts, speeding assembly time. The reduced weight of the RingSeal aids its installation.

Corrosion Protection

All components are coated with Rilsan Nylon 11 as standard. Universal EasiTees are supplied with Fluorine coated nuts and bolts.

Pressure Rating

16bar (230psi) working pressure/
24bar (350psi) test pressure.



Unique swing-over bolt action

Size Range

Universal EasiTee DN80/3" to DN300/12",
MattSeal EasiTee DN350/14" to DN600/24",
RingSeal EasiTee DN350/14" to DN1200/48".

A full range of flanged branch outlets are available, up to size for size (ie 600mm x 600mm). The EasiTee range is flanged to BS4504, PN16. Other flange drillings, e.g. PN10, BS10 table D,E, ANSI, can be accommodated as required.

EasiTee Underpressure Features and Benefits

No costly mains shutdown - costs are reduced as the EasiTee will allow flanged branch pipe connections to be made to an existing water main whilst it remains pressurised.

This avoids:

- a) Any potential expense of informing customers of a shutdown period.
- b) Any pumping diversion expense.
- c) Any dirty water complaints, common after supplies have been interrupted (due to the hydraulic effects of water scour and pressure surge).



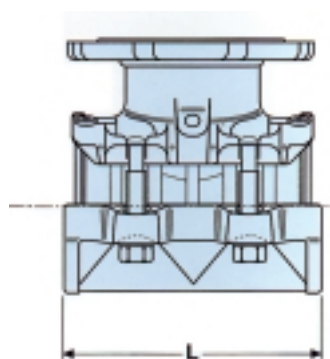
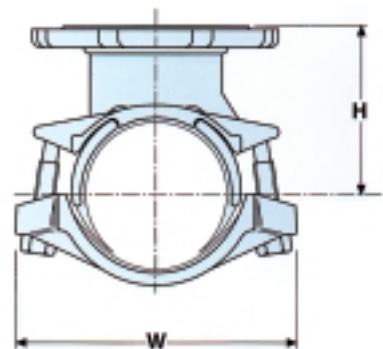
DN100/4" x DN100/4" Universal EasiTee



6" x 150mm Branch Universal EasiTee.



6" x 6" (150mm x 150mm) Universal EasiTee installed on 6" Cast Iron main.



Universal EasiTee overall dimensions.

Universal EasiTee can be used on most common pipe materials and has a tolerance range of up to 26mm.

Nominal Size (mm)	Flange Nom*	OD Range (mm)		Length	Housing (mm)		Bolts (mm) No. - Dia x Length	Weight kg
		Min	Max		Width	Height		
80	80	88.1	103	213	193	128	4 - M16 x 110	9.0
100	80/100	111.8	129.4	227	251.6	146	4 - M16 x 120	10.5
150	80/100	165.2	184.8	269	305	165	4 - M16 x 130	18.7
150	150	165.2	184.8	269	305	165	4 - M16 x 130	20.9
200	80/100	215.9	239.7	319	385	228	6 - M20 x 140	25.4
200	150	215.9	239.7	319	385	228	6 - M20 x 140	28.0
200	200	215.9	239.7	319	385	228	6 - M20 x 140	29.5
250	80/100	269.2	293.5	368	462	260	6 - M20 x 140	49.1
250	150	269.2	293.5	368	462	260	6 - M20 x 140	51.2
250	200	269.2	293.5	368	462	260	6 - M20 x 140	52.3
250	250	269.2	293.5	368	462	260	6 - M20 x 140	56.6
300	80/100	323.1	349	439	534	290	6 - M24 x 160	58.7
300	150	323.1	349	439	534	290	6 - M24 x 160	61.0
300	200	323.1	349	439	534	290	6 - M24 x 160	62.5
300	250	323.1	349	439	534	290	6 - M24 x 160	66.0
300	300	323.1	349	439	534	290	6 - M24 x 160	68.7

Flange Nom*. Up to 150mm, PN10 & 16 have the same dimensions and are therefore dual as standard.
From 200mm upwards, EasiTee has PN16 flanges as standard, PN10 and other drillings are available on request.

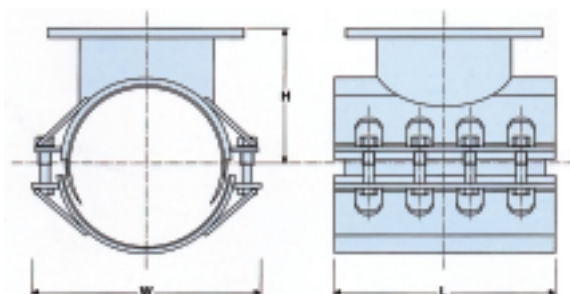
MATTSEAL EASITEE Sizes DN350/14" to DN600/24"



A 24" x 600mm branch MattSeal EasiTee being installed for a line stopping operation.



MattSeal EasiTee on 24" cast iron with 350mm branch.



MattSeal EasiTee overall dimensions.

Nominal Size (mm)	OD Tolerance	Flange Nom*	Housing (mm)†			Bolts (mm)			Weight kg
			Length	Width	Height	Qty	Dia	Length	
350	± 6mm	150	340	600	320	4	30	140	75.38
350	± 6mm	200	460	600	320	6	30	140	100.95
350	± 6mm	350	580	600	358	8	30	140	139.78
375	± 6mm	150	340	639	333	4	30	140	78.00
375	± 6mm	200	460	639	333	6	30	140	113.5
375	± 6mm	350	580	639	373	8	30	140	149.00
400	± 6mm	150	340	654	352	4	30	140	80.82
400	± 6mm	200	460	654	352	6	30	140	108.33
400	± 6mm	400	660	654	385	8	30	140	173.47
450	± 6mm	150	340	709	376	4	30	160	120.41
450	± 6mm	200	460	709	376	6	30	160	182.39
450	± 6mm	450	660	709	419	8	30	160	244.38
500	± 6mm	150	340	824	408	4	30	160	146.17
500	± 6mm	300	580	824	455	8	30	160	253.10
500	± 6mm	500	770	824	457	10	30	160	349.36
525	± 6mm	150	340	860	422	4	30	160	169.00
525	± 6mm	200	460	860	422	6	30	160	269.5
525	± 6mm	500	770	860	474	10	30	160	370.00
600	± 6mm	150	340	940	466	4	33	180	191.91
600	± 6mm	300	580	940	504	8	33	180	371.09
600	± 6mm	600	910	940	536	12	33	180	684.75

Housing (mm)†. Where shown, the dimensions stated are for the largest pipe diameter at a given nominal bore, usually class CD cast iron.

Mattseal EasiTee can be manufactured to suit Cast Iron, Ductile Iron and Steel pipes.

Three outlet sizes per nominal are shown for clarity in the table. Any outlet size is available, up to size for size.

Flange Nom*. Up to 150mm, PN10 & 16 have the same dimensions and are therefore dual as standard. From 200mm upwards, EasiTee has PN16 flanges as standard, PN10 and other drillings are available on request.

Other sizes available on request.

RINGSEAL EASITEE Sizes DN350/14" to DN1200/48"

RingSeal EasiTee offers a lighter, quicker option for many underpressure drilling situations. The range incorporates a single gasket between the host main and the branch, and can be used on any metallic pipe. Size for size branches are possible except when used on cast iron. For cast iron, Viking Johnson recommend that RingSeal is not used where the branch diameter exceeds 70% of the host main diameter. For such applications use MattSeal EasiTee. The lighter construction of RingSeal EasiTee means that installation time is greatly reduced, offering substantial on-site savings.



RingSeal EasiTee installed with valve and drilling machine.



Nominal Size (mm)	Actual Pipe OD	Flange Branch Nom	L (mm)	W (mm)	H (mm)	Bolts	Weight (kg)
350	378.0	80	236	508	311	4 - M16 x 210	35.9
400	453.1	400	572	591	421	14 - M16 x 210	140.7
450	457.0	150	288	591	366	6 - M16 x 210	51.0
450	507.0	150	288	647	393	6 - M16 x 210	59.9
500	508.0	80	236	644	376	4 - M16 x 210	40.5
600	610.0	200	344	754	444	8 - M16 x 210	79.0

Bolt Torque

All sizes of RingSeal EasiTee are connected with M16 bolts, thus the required torque for all sizes is 70-80 lbf.ft (95-110Nm).

RingSeal Range

Main Nom	Branch Nominal (mm)										
	80	100	150	200	250	300	350	400	450	500	600
350	●	●	●	●	●	●	●				
400	●	●	●	●	●	●	●	●			
450	●	●	●	●	●	●	●	●	●		
500	●	●	●	●	●	●	●	●	●	●	
550	●	●	●	●	●	●	●	●	●	●	
600	●	●	●	●	●	●	●	●	●	●	●
700	●	●	●	●	●	●	●	●	●	●	●
800	●	●	●	●	●	●	●				
900	●	●	●	●	●	●					
1000	●	●	●	●	●						
1100	●	●	●	●	●						
1200	●	●	●	●	●						

Features and Benefits

No Costly Mains Shutdown

Costs are reduced as the EasiCollar will allow repairs to be made to the spigot and socket joint whilst the main line is pressurised.

This avoids:

- a) Any potential expense of informing customers of a shutdown period.
- b) Any pumping diversion expense.
- c) Any dirty water complaints, common after supplies have been interrupted (due to the hydraulic effects of water scour and pressure surge).

Permanent Repair

Once installed there is no future maintenance required.

Corrosion Protection

All components are coated with Rilsan Nylon 11 as standard. The nuts and bolts are coated in either Rilsan Nylon 11 or Sheraplex (at the discretion of Viking Johnson).

Pressure Rating

16bar (230psi) working pressure/ 24bar (350psi) test pressure.

Size Range

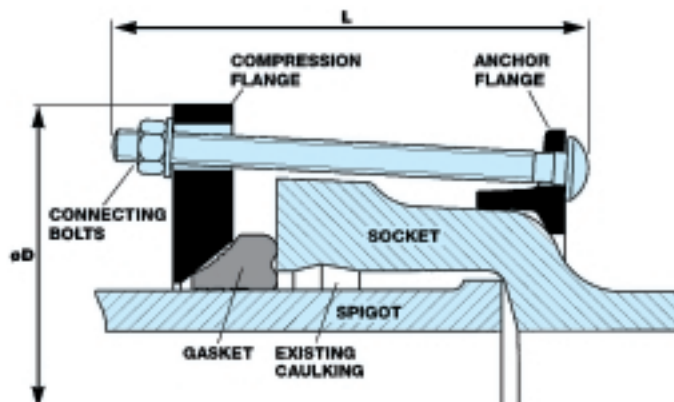
DN80/3" and above.
Sizes available on request.

Pipe Materials

Suitable for cast iron, ductile iron, steel, asbestos cement and concrete. Other pipe materials may be catered for.



DN100/4" EasiCollar



Typical EasiCollar configuration

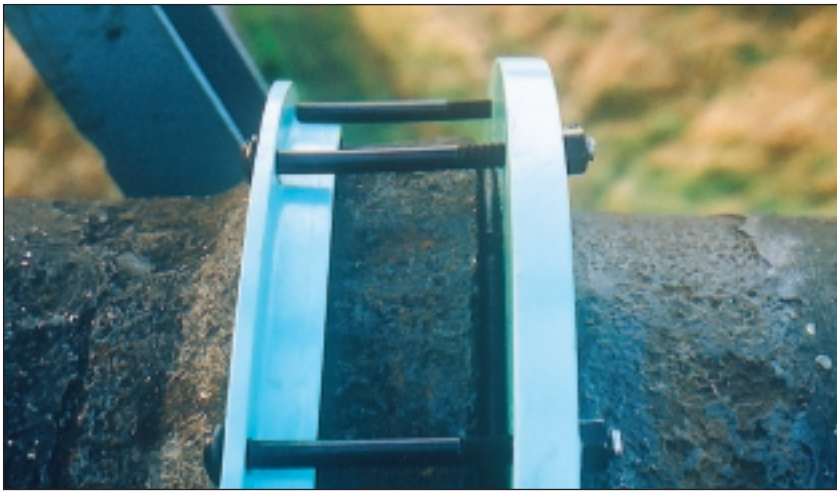
Typical EasiCollar Dimensions to suit Cast Iron*

Pipe Nom **		L (mm)	ØD (mm)
mm	inches		
80	3 AB CD	-	-
100	4 AB CD	-	-
125	5 AB CD	-	-
150	6 AB CD	-	-
200	8 AB CD	-	-
225	9 AB CD	-	-
250	10 AB CD	-	-
300	12AB	261	527
300	12CD	261	550
350	14AB	261	585
350	14CD	261	611
375	15AB	261	614
375	15CD	261	641
400	16AB	261	642
400	16CD	261	671
450	18AB	261	703
450	18CD	261	734
500	20AB	261	751
500	20CD	261	783
525	21AB	261	781
525	21CD	261	813
600	24AB	286	867
600	24CD	286	902
675	27AB	286	954
675	27CD	286	990
750	30AB	286	1057
750	30CD	286	1076
825	33AB	286	1143
825	33CD	286	1164
900	36AB	286	1228
900	36CD	286	1249
1050	42AB	286	1400
1050	42CD	286	1423
1200	48AB	286	1570
1200	48CD	286	1595

* Other pipe materials and spigot and socket diameters may be catered for. Please see EasiCollar Features and Benefits for pipe materials.

** Larger sizes available on request.

NB: Sizes 80mm - 250mm will also suit ductile iron spigot and sockets with the same nominal bore.



EasiCollar installed on severely corroded cast iron main (Note gasket compression)



EasiCollar installed onto 15" cast iron main

ORDER/ENQUIRY (Please delete)

*Delivery time/date:

Quantity:

Spigot OD (max):

Dim A:

Dim B:

Dim X:

Dim Y:

Dim Z:

Pipe material:

Pipe markings/class rating:

Person to contact:

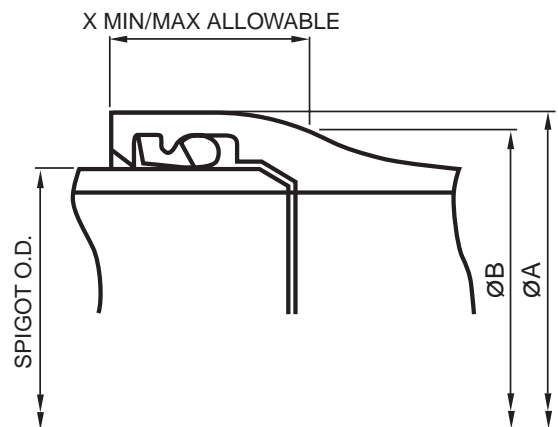
Company:

Tel. No:

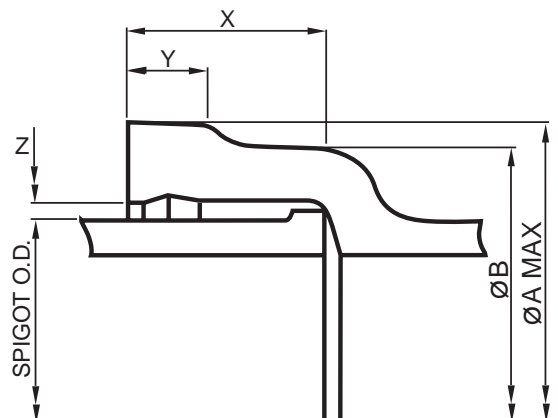
Fax No:

*** For fast turnaround deliveries, surcharges will be applied. Prices available on request.**

DUCTILE IRON



CAST IRON



Please note: Due to the number of different types of spigot and socket joints, with varying tolerances, when ordering/enquiring about the product it would help if you could provide us with some basic information.
Please use cross-sectional drawing and form to record dimensions, photocopy and fax back to us with this information.

When ordering EasiCollar, please photocopy this page and fax back to Customer Service Department on
+44 (0)1462 443127

Material Specification and Standards

Quality Assurance

EasiRange products are designed and manufactured in accordance with quality management systems certified to BS EN ISO 9001 and have been tested in Viking Johnson's comprehensive in-house research facilities to the most exacting performance requirements.

EasiTee and EasiClamp/EasiTap

Universal EasiTee DN80/3" - DN300/12"

EasiClamp/EasiTap DN250/10" and DN300/12"

Saddle/Flange, Bridging Plate and Half Housing

Malleable Iron to BS EN 1562:1997 SYMBOL EN-GJMB-350-10
or

Ductile Iron to BS EN 1563:1997 SYMBOL EN-GJS-450-10

Bolts

BS EN20898-1:1992 Property Class 4.8

Gaskets

Grade E, EPDM 60 IRHD Rubber to BS2494:1990/W&D

EasiClamp/EasiTap DN50/2" and DN200/8"

Half Housing

Malleable Iron to BS EN 1562:1997 SYMBOL EN-GJMB-350-10
or

Ductile Iron to BS EN 1563:1997 SYMBOL EN-GJS-450-10

Bolts

BS EN20898-1:1992 Property Class 4.8

Bridging Plates

Stainless Steel to BS1449:Part 2:1983 Grade 304S15

Gaskets

Grade E, EPDM 60 IRHD Rubber to BS2494:1990/W&D

MattSeal EasiTee and MattSeal EasiClamp/EasiTap

Half Housing

Mild Steel to BS EN10025:1993 Grade S275JR

Bolts

BS EN20898-1:1992 Property Class 4.8

Bridging Plates

Stainless Steel to BS1449:Part 2:1983 Grade 304S15

Gaskets

Grade E, EPDM 60 IRHD Rubber to BS2494:1990/W&D

RingSeal EasiTee and RingSeal EasiTap

Half Housing

Mild Steel to BS EN10025:1993 Grade S275JR

Bolts

BS EN20898-1:1992 Property Class 8.8

Gaskets

Grade E, EPDM 70 IRHD Rubber to BS2494:1990/W&D

EasiCollar

Compression Flange

Steel to BS EN10025:1993 Grade S275.

Anchor Flange

Steel to BS EN10025:1993 Grade S275.

Gasket

Grade E, 60 IRHD EPDM to BS 2494:1990/W+D.

Bolts, Nuts and Washers

Steel to BS EN 10083:Part 1:1991 Grade 2.C.22

Nuts to suit to BS4190:1967:Table 12: Double Chamfered,
Grade 4.0, Fig. 6.

M12 Washers are Form A Stainless Steel A2.

Torque Table

BOLT	SPANNER/ WRENCH SIZE	BOLT TORQUE	
M16	A/F 24mm	70-80 lbf.ft	(95-110Nm)
M20	A/F 30mm	110-120 lbf.ft	(150-165Nm)
M24	A/F 36mm	210-220 lbf.ft	(285-300Nm)
M30	A/F 46mm	400-420 lbf.ft	(550-575 Nm)
M33	A/F 50mm	450-470 lbf.ft	(615-645 Nm)

Materials of construction at the discretion of Viking Johnson.

For product availability consult your nearest distributor or agent.

Viking Johnson reserves the right to modify the details in this publication as products and specifications are updated and improved.

For further information on all Viking Johnson products and services contact our Marketing Department.



ISO 9001



ISO 14001

CRANE

A Crane Co. Company

VIKING JOHNSON

Viking Johnson

46-48 Wilbury Way
Hitchin
Hertfordshire
SG4 0UD
United Kingdom
Tel: +44 (0)1462 443322
Fax: +44 (0)1462 443311
email: info@vikingjohnson.com
www.vikingjohnson.com